



Perspectives in Healing

A PUBLICATION OF HEALING BEYOND BORDERS

4TH QUARTER 2013

In this issue:

| | |
|--|----------|
| Directory | 2 |
| <i>Who We Are</i> | |
| Editor's Letter | 3 |
| <i>Expanding Our Vision - Part 4</i> | |
| Motivations from the President | 4 |
| <i>Change</i> | |
| Inspirations | 5 |
| <i>Poem - Healing Beyond Borders</i> | |
| Reflections from Past President | 6 |
| <i>It's Time</i> | |
| Board Corner | 8 |
| <i>4th Quarter Update</i> | |
| Heart Centered Marketing | 9 |
| <i>Marketing Update</i> | |
| Newly Certified | 10 |
| <i>Congratulations!</i> | |
| Networking Column | 10 |
| <i>Upcoming Conferences</i> | |
| Marketing Brochures | 11 |
| Birth Announcement | 11 |
| Integrative Health Care | 12 |
| <i>Dawn of a New Day</i> | |
| Practitioner Perspective | 14 |
| <i>It's Not What I Do; It's Who I Am</i> | |
| 2014 Conference - Colorado | 15 |
| Thank You Silent Auction Grantors | 17 |
| Community Outreach; Affiliates | 18 |
| <i>Australasia Conference</i> | |
| Reflection | 20 |
| <i>What Are We Actually Doing?</i> | |
| Educational Insights | 21 |
| <i>Educating and Certifying</i> | |
| Energy Research | 22 |
| <i>Expanding Our Vision</i> | |
| Words of Wisdom | 23 |
| <i>Time</i> | |
| Grace and Intention | 24 |
| 2013 Conference Photos | 25 |
| Professional Development | 29 |
| Class Schedules | 30 |

***Spreading Healing Light
Worldwide through heart
centered service, education
and professional development***

Wholeness Through Service: Expanding Our Vision Part 4 - It's Time...



"You must be a lotus, unfolding its petals when the sun rises in the sky, unaffected by the slush where it is born or even the water which sustains it." ~ Sai Baba

HEALING BEYOND BORDERS

445 UNION BLVD., SUITE 105

LAKEWOOD, CO 80228

303-989-7982 FAX: 303-980-8683

OFFICE HOURS (MOUNTAIN TIME)

8:30 AM - 4:30 PM MON. - FRI.

WWW.HEALINGBEYONDBORDERS.ORG

STAFF

Executive Director / Integrative Healthcare / Editor

Lisa Anselme

Director@HealingBeyondBorders.org

Office Administration / Certification / Graphics

Kassi Anderson

Certification@HealingBeyondBorders.org

Office Administration / Membership

Cathy Nunemaker

Membership@HealingBeyondBorders.org

Office Administration / Education

Carrie Niewenhous

Education@HealingBeyondBorders.org

Research Director

Joel Anderson

intentionshealing@gmail.com

BOARD OF DIRECTORS

President

Mary-Cathrine Campbell

mc_campbell@sympatico.ca

Vice President

Evie Caprel

evie@livewellhealing.com

Treasurer

Rauni Prittinen King

rking487@aol.com

Secretary

Denise DeForest Pastoor

ddpastoor@gmail.com

Director

Joel Anderson

intentionshealing@gmail.com

Director

Kimberly Gray

mysticangelhood@earthlink.net

Director

Jeanne Whalen

jwshamrock@sbcglobal.net

BECOME A MEMBER NOW

call us at 303-989-7982 or visit us at
www.HealingBeyondBorders.org

This periodical is published quarterly (4 times a year). We welcome articles, photographs, advertising and other items. All items are published on a space available basis and with the approval of the Executive Director. We acknowledge all submissions; originals will be returned upon request. Send advertising and articles to Director@HealingBeyondBorders.org ... Thanks!

© by Healing Beyond Borders. All rights reserved. No reproduction or other use without the permission of HBB.



HEALING BEYOND BORDERS

Educating and Certifying the Healing Touch™

Spreading Healing, Light and Love,

Creating Wholeness on Earth

through heart-centered service, education

and professional development.

Healing Touch – a Nurturing Energy Healing Therapy

Healing Touch is a nurturing and heart-centered biofield (energy) healing therapy. Gentle touch assists in balancing physical, mental, emotional and spiritual well-being. The goal in Healing Touch is to restore harmony and balance, to support the body's natural healing ability. It is safe for all ages and works in harmony and collaboration with standard medical care.

Healing Touch is used in a wide variety of settings including hospitals, long term care facilities, private practices, hospices and spas and is taught in universities, medical and nursing schools and other settings internationally.

HTI Healing Touch Certificate Program

The HTI Healing Touch Certificate Program includes 5 levels of training provided by Healing Beyond Borders Certified Healing Touch Instructors. Classes are open to anyone interested in healing. Students progress through the course at their own pace and may take as many levels as desired. Nursing and Massage continuing education contact hours are provided.

Healing Touch grew out of the nursing practice of Janet Mentgen and was developed as a certificate program by the Education Committee of the American Holistic Nurses Association (AHNA) in 1989. In 1996, the AHNA Healing Touch Certificate Program and credentialing was transferred to Healing Touch International and became the HTI Healing Touch Certificate Program; this original standardized curriculum continues today. AHNA has endorsed the HTI Healing Touch Certificate Program since 1997. See www.HealingBeyondBorders.org. Click on Education for class information.

Healing Beyond Borders Healing Touch Certification

Healing Beyond Borders Certification Board offers credentialing for Certified Healing Touch Practitioners (CHTP), and Certified Healing Touch Instructors (CHTI). Certification was established within AHNA in 1993, and transferred to Healing Touch International, now dba Healing Beyond Borders, in 1996. Students, Practitioners, and Instructors are responsible to practice with integrity, adhering to the Healing Beyond Borders Standards of Practice / Code of Ethics, and Scope of Practice.

Healing Beyond Borders, Non-profit Membership Organization

Healing Touch International, Inc., now doing business as Healing Beyond Borders, is the Healing Touch non-profit professional organization founded by Janet Mentgen RN in 1996. We are dedicated to spreading healing, light and love worldwide, and supporting the heart-centered practice and teaching of Healing Touch, Continuing Education, Research, Health Care Integration, and Professional Development. Support services are provided for the general public, Students, Practitioners, Instructors and those interested in healing.

Healing Beyond Borders Core Values

- Integrity
- Heart Centeredness
- Respect of Self and Others
- Service
- Community
- Unconditional Love

HTI 2003, Revised 2004

Healing Beyond Borders Perspectives in Healing, the official publication, is published quarterly.

Photo Credits: Lotus(s), Forest, by L. Anselme; Winter Robin, Conference Photos by Cat. Miller



Letter from the Editor

Expanding Our Vision - Part 4

by Lisa Anselme RN, BLS, HN-BC, CHTP/I, Executive Director

"It may be hard for an egg to turn into a bird: it would be a jolly sight harder for it to learn to fly while remaining an egg. We are like eggs at present. And you cannot go on indefinitely being just an ordinary, decent egg. We must be hatched or go bad."

~ C. S. Lewis

We must be hatched or go bad... a seemingly obvious choice. Nursing, psychology, and the Human Potential Movement all acknowledge the critical path of a human is to expand and grow. I recently saw a quote on Facebook: *"Your Time as a Caterpillar Has Expired.... Your Wings are Ready."*

Andrew Stirrat, our organizational facilitator of 10 years and a highly respected consultant who has worked with over 200 global and national clients, often uses the phrase, *"Go slow to go fast."* In other words, take the time to evaluate, plan and gather an overview of the situation; yet when the time is ripe, the data is in place, and the energy is ripening efficiently and exponentially, move forward confidently and swiftly. Proceed with hatching or suffer the consequence of becoming obsolete, irrelevant, diminished or dead.

I have personally worked with a number of patients and clients who were facing major life decisions, some of them very much matters of life and death. Inevitably, the inability to make a decision becomes in itself a decision; the inability to step forward, be it towards therapy, life, death, marriage, divorce, and so on, results in a passivity in which one can only respond and react. This is different than practicing presence and ultimately surrendering to a highest good; in practicing presence, we make the best decisions and actions with the knowledge available to us at the time, and then surrender to a highest outcome, remaining present to our next unfolding. In this instance, the surrender is not passive, but rather an active response, a "beingness".

When we are faced with change or making a decision, we essentially enter a crossroads. In the crossroads, we have the option of going backward and returning to the "original situation", (knowing that the situation has now changed as all things change, and the situation is no longer the "original situation") or going forward toward what may possibly be. We may also go sideways in an attempt to circumvent a decision, yet that is a move that may only place us once again within another crossroads. Being unable to make a decision

and move forward, or remaining in the crossroads over time, takes a great deal of energy; our indecisiveness ultimately weakens us as we are pulled in multiple possibilities of "what if". This can occur both personally, professionally, and within organizations, groups and nations. The potential outcome is that we will become less vitalized such that we are more incapable of making a decision or taking action, and risk being run over by a truck.



Each of us has faced many crossroads in our lives. We have done so both individually and collectively. There is only one way of moving through such times and that is by returning to inner balance and presence. As we do that, a shift occurs in our understanding of the power that is within all of us when we align with the Earth and Source. This allows us to realize that our resistance and indecision comes from a fear that we will make an error, and from the illusion that we are separate from this alignment between heaven and earth.

These past 10 years, organizationally we have seen changes that we could never have foreseen in our wildest imaginations. We also have seen remarkable acts of courage, compassion, kindness, strength, collaboration, leadership, brilliance, synchronicity and hope. May that continue as we move forward into this next decade.

This past year our nonprofit organizational leadership made a guided and well grounded decision, based upon expert advice and professional consultation, to step out of the crossroads. We made a determination to move forward so that the various groups that we represent

continued on page 4



Motivations from the President

Change

by Mary-Cathrine Campbell RN, BA, CHTP, Healing Beyond Borders President

How do you feel about change? I have a love/hate relationship with it. On the one hand, change is exciting. It means new energy, vitality and growth. On the other

hand, change usually disrupts a comfortable routine or rhythm---and I like my routines. Routines are safe and predictable. Change of any kind disrupts that. It brings upheaval and sometimes a bit of chaos into my life. It shakes up my world, sometimes momentarily, but sometimes for longer periods of time. This can make me feel uncertain and anxious. Change that I haven't instigated or planned provides a more challenging adaptation process on my part. I feel that I have "lost control". (The reality is that I am never in control---it's just a Divine illusion). Ask any parent. I think most of us would describe raising a child (or children) as an ongoing series of adaptations to the sudden and unpredictable changes our offspring bring into our lives as they evolve and mature from infants into adults.

Many of us with nursing backgrounds know that our day can be turned upside down in a matter of moments, by one or more incidents. I believe that this is true in any field. I just happen to be most familiar with nursing. We develop coping skills that enable us to process changes that sometimes demand immediate responses; sometimes we have more time to acclimatize to the change, and integrate it into our lives.

In the past, when unsolicited change appeared in my life, I would often dig in my heels to protect what I knew was comfortable and safe. Over the years, I have come to see that taking such a position did not serve me well when it came to growth---whether that was personal or professional. Often, in hindsight, I was afraid to take the leap of faith, unsure where it might lead. Sooner or later, though, I had to make a decision: to go forward and grow, or to stay still and stagnate.

Sometimes I have chosen to consider a big change in small steps or sections, gradually incorporating certain parts or aspects and "growing into" the new idea/concept/practice or lifestyle over a period of time. I would like to share an example of this from my professional life. Over the past year, the hospital where I work changed medical suppliers. All of the RNs in our

department had been very happy with the PICC line insertion kits we had been using for over 8 years. Without any input from us, we were informed by our Clinical Leader, that we would be using a different kit, with a different technique for insertion. None of us wanted the change, but it happened. Today I can say that the new kit and technique has its advantages. Being forced to adapt to new circumstances in this instance brought professional growth for me. I have become proficient in utilizing two different techniques to achieve the same result.

Change is part of life. It often comes when we are settled in and comfortable, perhaps not quite ready to get "moving" into expanded thinking or being. I think that it also, like the proverb of the student and teacher, appears when it is time for us to grow, spread and evolve into higher or deeper aspects of our being.

That being said, it is my sincere wish for each of you, that you are able to embrace the changes this year has brought, and move into a higher vibration of being in your own time. It may vary from person to person perhaps, but I hope to see as many of you as possible at conference in 2014 as we expand our beloved work beyond all borders....financially, socially, culturally.

With appreciation for all of your dedication to this work,
~ Mary-Cathrine

Letter from the Editor cont...

could clearly identify us and recognize what we do. This includes all who we serve: students, practitioners, instructors, members, patients, clients, diverse cultures and belief systems, diverse health care systems and the general public. We determined to clarify and declare our philosophical core vision, mission, purpose and values. We are moving forward to clearly embody and reflect who we are and what we do. Our board has determined that it no longer is good enough to simply be the gold standard in energy therapies; we have set the course and established the strategic path to become the platinum standard in energy therapies, particularly in Healing Touch. We are most excited and invite you to continue your active participation in this most valuable work of Healing Touch. I wish all of you a most inspired and blessed year ahead. ~ Lisa

Inspirations

Healing Beyond Borders

By Denise DeForest Pastoor, MEd, APRN, BC, CHTP

Gentle spirits, loving hearts standing hand in hand.
Gazing outward, reaching up, new visions looking grand.
Shimmering tendrils cascade down in heaven's golden light.
Rooted energy from Mother Earth rises up, glowing bright.

Everything happens as it should for now we know- it's time.
Divine guidance whispers strong and clear, where we need to climb.
Dismantling the old in times of change makes room for all anew.
Smooth transitions with set intentions unfold as strong as glue.

Awakening energy and expanding vision bring ideas to fruition.
To clearly sense heavenly love affirms a steadfast mission.
Just as a lotus flower, rooted in mud, reaches for sun's embrace.
Our petals unfurl, rising unsullied from murky waters, with grace.

Passion and purpose, a gift from source, our open arms receive.
“**Healing Beyond Borders**”, the name unfolds, a blessing to believe.
It is heart-centered service, nurturing love, and spreading light afar.
“**Healing Beyond Borders**”, as the name reflects, setting a higher bar.

August 2013





Reflections from the Past President

It's Time

by Mary O'Neill RN, CHTP, I Immediate Past President

*"We must use time wisely and forever realize that the time is always ripe to do right."
~ Nelson Mandela*

I have had the distinct pleasure over the past six years to serve on the Board of Directors. At that time, I was appointed to fill the vacancy of a Board member who needed to step down before the term was complete. I anticipated a short term and then planned to get back to my usual routine and HT activities. What I learned in my time on the Board was it was an incredible opportunity to grow, learn and deepen my connection to the organization. Over these years, I have learned our origins, history and the underpinnings of the non-profit organization that was established by Janet Mentgen in 1996. This, indeed, was my next step on my personal growth journey. The opportunity of service brought me to a place of reflection, courage, inspiration, commitment and honest evaluation of this organization's deepest purpose. I am grateful for the many ways that I have grown over these past six years. The work has deepened my personal commitment to service; I look forward to many more ways to serve the organization in the future.

The Board is responsible to look at the past, present and future of the organization and develop strategies to take it forward in a way that is in alignment with our Vision, Mission and goals. This is done through the process of scheduled

meetings and Strategic Planning. During Strategic Planning, the Board gathers and our skilled and experienced facilitator walks with us through three and half days of looking at every aspect of the organization and its processes. In March of this year, following this evaluation, the Board made an absolute energetic commitment to move the organization forward to a new level. We didn't know what that would look like but we were

dedicated to moving forward to a new level of service. The first important step of commitment took place in Colorado in March. We also scheduled the next planning meeting in August rather than at conference. This allowed for uninterrupted time, away from the many distractions in the days before conference. Once that commitment was made by the Board, a series of events transpired to allow that forward movement to take place. We could have never planned it! Unlikely connections occurred that brought the people with the talents to assist in moving us forward and releasing entanglements. They offered honest evaluations and recommendations. We paid attention to the energy of what was given to us and at the August planning meeting the Board unanimously made the decision to rebrand our organization to the new name Healing Beyond Borders, *Educating and Certifying the Healing Touch*. One phrase that came to us during this meeting in August was that it was the exact right time to take this action. It could not have worked in 2008. This was the time! So many energetic examples were given to

us to affirm that it was time, that the time was *now* and that we needed to pay attention. The name and the logo were checked energetically and both were off the charts for high energy in alignment with our Vision, Mission and goals.

At this year's conference we presented the new

name and logo as I transitioned out of office and Mary-Cathrine Campbell began her term as President. Mary-Cathrine is also the first President "beyond borders", being from Toronto, Canada. I recognized the leadership skills of Mary-Cathrine early on and have great confidence in her ability to lead the Board in taking the organization to the new level identified in the March Stra-

continued on page 7



Mary Presenting at First Peruvian Conference

Past President Reflections cont...

tegic Planning. Her commitment to the organization, Healing Touch work and her solid nursing background provide a depth and richness that will benefit all. She is an excellent leader and I have full confidence in her abilities. It's time! Our Canadian colleagues have been hand in hand with us since the very beginning. What a gift they have offered us in Mary-Cathrine Campbell.

On October 15th I again traveled to Peru as an ambassador of Healing Beyond Borders, to present an invited keynote for their first Conference. The theme, *Embracing the New Humanity*, provided a rich, deep experience for all 120 participants. Several South American countries were represented. On behalf of Healing Beyond Borders, I presented them with a banner proclaiming the new name and logo in Spanish. It was warmly received. Representing Healing Beyond Borders at this conference afforded a great opportunity to reconnect with friends, meet new students and practitioners, and of course, spend time with our Instructors. Healing Touch is taking hold in South America and students are rapidly moving toward certification. I was introduced to a group from the jungle hospital in Maldonado. This group of physicians and nurses arrived for the conference and were warmly welcomed. They have taken HT classes and are using it with their patients. It is so inspiring to see the work that is growing and how far reaching the benefits. This hospital is deep in the jungle and the only way in is on a boat on the Amazon River. There in the middle of the jungle in Peru, Healing Touch is being taught and practiced. As I left Peru, Marg Kehoe was leaving to go to India to teach HT classes for a community assisted by one of their Presentation Sisters. Following the classes, she will visit her home in Australia and return to Peru in February. Deep commitment to this work can take you to many new and different places. But the work is still the work and we can trust that the time will always be exactly right. We just need to be open, flexible and willing to adapt.

Change is often uncomfortable but it doesn't have to create suffering. I did my own personal work around the name change. I reflected that I came into the organization just as Janet Mentgen founded Healing Touch International in 1996. It is the name I grew up with as I studied and became certified. But what I realized was that Janet accepted the change and transfer from

AHNA into HTI over just a few days. She wasn't attached to just one name. She saw and recognized the importance of the work being done. If it took a name change to make it so....then so be it! Birthing HTI to accomplish a goal of expanding the work to certify non-nurses was completed. She also was open to changing the name of her personal for-profit business; Colorado Center for Healing Touch became Healing Touch Program.



We have also grown beyond the name Healing Touch International, and this new name gives us the space and opportunity to grow in many new ways and expand our work. We are committed to the growth and development of Healing Beyond Borders, *Educating and Certifying the Healing Touch*. Join us, it's time and "the time is always ripe to do right".

As I step out of leadership, I would like to extend my deepest gratitude to the Board of Directors for their commitment, to our Executive Director and the office staff for their dedication to serving our community, to each student, practitioner and instructor for their resolve to "do the work" and to our friends, benefactors, trusted advisors, clients, patients and families for trusting and believing in the value of Healing Touch and our organization. I have grown because I have been touched and changed by all of you.

Thank you,
Mary

Board Corner

4th Quarter Update

by Joel G. Anderson, PhD, HTI-P, HBB Board of Directors and Research Director



What an exciting conference! This year, conference returned to the location of the first conference almost two decades ago. It was a homecoming, with the office just across the street, and a step forward in the work of the organization with our new name - Healing Beyond Borders - Educating and Certifying the Healing Touch™. The evening that the Board unveiled this new name—a culmination of our work over the past year—we activated as a group the energy behind this name and our organization through drumming and voice led by musician Christine Stephens. It was an experience those in attendance will not soon forget.

Your Board has worked diligently all year, and particularly in the months leading up to conference, to reassert our identity and hold the energy of the core values and mission of this organization. Our work has been carried with deep meditation, intention and highest vibration. Personally, I can speak to the great, immediate and heartfelt shift in energy when the new name came into being.

Over the next weeks, many of the efforts of the Board at our two strategic planning meetings this year will

come to fruition. Several of our goals and strategies have been linked to a new, dazzling and highly functional website, which is in development and will be launched in the spring. Your Board wants to make as many timely and useful resources available to you as possible, in aid of our mission to spread healing light worldwide. Thus, more new and exciting things are in the horizon in terms of interaction, resources and opportunities to become involved and engaged in the work that makes Healing Beyond Borders the positive organization that it is.

Personally, I would like to add what a deep honor it is for me to serve our community as a member of the Board of Directors and Research Director. It was humbling to meet so many of you during conference, particularly those who were instrumental in founding and growing this organization, and hear your comments, concerns and affirmations. I look forward to next year's conference in Colorado Springs in September 2014 and the exciting journey ahead as we all continue to "just do the work."



Conference Lost & Found Items

These items were found at our 17th annual Healing Beyond Borders conference this October in Lakewood, Colorado. If either of them are yours, please call the office and we'll be glad to mail them to you.

One black J-Jill 100% Linen black sweater, size M, 3/4-length sleeves, with small "air holes" down the sides of the sweater.

One turquoise Kirkland Signature jacket, size L, nylon/spandex, long sleeves.

Heart Centered Marketing

Marketing Update

by Evie M. Caprel, BA, CHTP, FT, WC, Vice-President, Healing Beyond Borders

Did you know there are many nurses who are on LinkedIn? It's a great way to connect with other nursing and healing professionals. Think of it as a 'Rolodex'; but it's more flexible and usable. It's also a way to reach around the world! It's easy to sign up, and then you can join the Healing Beyond Borders - Educating and Certifying the Healing Touch™ Group.

Facebook 'likes' are well over 2,000! Join Facebook, and 'like' the Healing Beyond Borders page. Invite friends and colleagues to join too. Grow Healing Touch Healing and the reach of Beyond Borders!

Healing Beyond Borders is also on Twitter. Do you have research news or information on Healing Touch? Tweet us #HBBresearch .

Healing Beyond Borders' social media presence is growing! Watch in early 2014 for new developments – so make sure to join LinkedIn, Facebook and Twitter now! Need help? Contact evie@livewellhealing.com.

Business Tip of the Quarter

The holidays are upon us, and you can promote your business with a gift of Healing Beyond Borders, Educating and Certifying the Healing Touch™! Here are some ideas for the holidays:

- ✓ Offer gift certificates. Include an expiration date.
- ✓ Offer 6 Healing Touch sessions for the price of 5.
- ✓ Offer a free session for receiving two referrals (who book and have paid sessions).

You also can give gifts of Healing Touch!

- Purchase a membership in Healing Beyond Borders for a friend, colleague or loved one. Membership includes discounts on resources and products, such as research materials, great discounts on classes and Conference, plus networking and relationship-building with like-minded healers, all for only \$100.
- Give a gift in the name of your special someone through a grant donation to Healing Beyond Borders. You can designate where the funds will go.
- Great gifts are also available on the Healing Beyond Borders website. Click "Shop" for ideas and order today!
- Offer a complimentary Healing Touch session

as a holiday gift to a specific person who could connect you to others. As I'm sure you know, the more people who experience a Healing Touch session, the more people who will talk about how great it made them feel. Give people a reason to tell others about you and the benefits of Healing Touch!



2014 Conference

Start planning now for 18th Annual Energy Healing Conference & Instructor Meeting, Sept. 4-7, 2014! You won't want to miss the fantastic program in the serene setting in Colorado Springs, CO, at the exclusive Cheyenne Mountain Resort. You can reserve your room now by going to the website! Conference Registration will open soon.

Call for Perspectives in Healing Articles

PIH needs you! Start 2014 with an article to help others. Share your experiences, success and solutions to challenges you have faced. Not comfortable with writing? Email evie@livewellhealing.com with an idea, and we'll take it from there!

2014 and Beyond!

Healing Beyond Borders will be representing you at more trade shows, in more publications and with enhanced communications around the world in 2014. We're looking forward to having you as an integral part of our growth as we reach those who can benefit from our work. Thank you for sharing Healing Touch!

Live well,
Evie



Follow us on
Facebook,
Twitter,
LinkedIn



~ Congratulations ~ Newly Certified Practitioners

Allison Ainslie- North Beach, Australia
 Sierra Baker – San Diego, CA
 Kim Billings – Cedar, MN
 Carrie Christopherson – Fort Pierre, SD
 Estela Monica Condado Vega – San Borja, Lima, Peru
 Jann Crock – Golden, CO
 Lisa Crouch – Walnut Hill, IL
 Sherry DePinto – Hillsborough, NJ
 Alisha Duckett – Inver Grove Heights, MN
 Lisa Ender – Mahtomedi, MN
 Toni Esposito – Ocean City, NJ
 Susan Ewald – Blaine, MN
 Stephanie Fontenot – Red Wing, MN
 Regina Gaudet – Kaleden, BC, Canada
 Dodie Georgiades – Boonton, NJ
 Marie Greenrose – Poway, CA
 Bette Groven – Richfield, MN
 Deborah Harlow – Richmond, BC, Canada
 Rebecca Hauge, Fargo, ND
 Cary Hobbs – Chesterfield, MO
 Kathy Kaufmann – Burnsville, MN
 Betty Keiner – Owasso, OK
 Marie Kirchner – Clear Water, MN
 Tatyana Koshker, Oklahoma City, OK
 Kim Kuhar – Ruidoso Downs, NM
 Susan Kuske, Eagan, MN
 Laura Kuster – Ruidoso Downs, NM
 Jody Larrison – Edmond, OK
 Ted Long – Grayling, MI
 Peggy Lorenz – St. Louis, MO
 Rebecca Lundgren – Encinitas, CA
 Jill Maltrud – St. Paul, MN
 Michelle McLemore – Brooklyn, MI
 Andrea Mutascio – San Diego, CA
 Pamela Potenzo – Indio, CA
 Lisa Rabideau – Morrisonville, NY
 Leta Reimler – Nicoma Park, OK
 Roxanne Schlasner – Rochester, MN
 Theresa Schrank – Webster, MN
 Margaret Sheen – Kealia, HI
 Sue Sheppard – Minneapolis, MN
 Ann Stenson – La Quinta, CA
 Christine Stewart – Palo Cedro, CA
 Christie Stineman –Grandview, IA
 Laurie Straw – Bernidji, MN
 Carol Tempel – Charlevoix, MI
 Virginia Timmons – Eagan, MN
 Barbara Voth – Red Wing, MN
 Steve Varvatos – South Orange, NM
 Wendy Wheeler – Sauk Rapids, MN

Healing Beyond Borders Networking Column

Healing Touch Networking Column

Healing Beyond Borders is pleased to offer the following column as a means to facilitate networking within your local communities. Healing Beyond Borders makes no claims as to the accuracy or content of the various networking groups. It is our expectation that all groups conduct themselves in accordance with the Healing Beyond Borders Code of Ethics & Standards of Practice and maintain respect and confidentiality of all networking information.

Community Meetings/Gatherings

The purpose of community meetings is to: build community; educate by relaying information from the international organization outward; promote membership in Healing Beyond Borders; encourage attendance at the international annual conference, thus affording global networking for students, practitioners and instructors.

North Central Healing Touch Gathering

Date: March 7 -8, 2014

Location: Plymouth, MN

Speaker: Anne Westfall

For more information: www.nchtcommunity.org

Affiliate Organizations:

National & International Conferences

Healing Beyond Borders 18th Annual Energy Healing Conference & Instructor Meeting

Date: September 4-7, 2014

Location: Colorado Springs, Colorado

- Cheyenne Mountain Resort

Theme: *Healing Beyond Borders*

Keynote: *Gregg Braden - stay tuned for updates*

Contact: For additional information please visit:
www.HealingBeyondBorders.org

~ Congratulations ~ Newly Certified Instructors

Sharon Smith – Bainbridge, IN
 Mary Kay Foley- Hailey, ID



Healing Beyond Borders

Educating and Certifying the Healing Touch™

We are all very excited with the blossoming and renewed energy the name change has brought to the organization. A few of you had questions regarding using marketing materials with the HTI logo on it – such as brochures, business cards, etc. Please feel free to use up what you have and then order new ones with the Healing Beyond Borders logo. For those ready, the new brochure is currently available through www.healingbeyondborders.org. Click 'Shop', or call the office at (303) 989-7982. More to come in 2014!

Thanks,
Evie Caprel, Marketing Committee Chair

A Healing Touch session feels like a nurturing radiance that flows through and around you. Each individual experience is unique and based upon your individual needs.

"I receive Healing Touch to bring in serenity, balance and love. Healing Touch is my monthly infusion of peace."
— Andrea Rietsch, Mother of three

Healing Beyond Borders
Educating and Certifying the Healing Touch™

Healing Beyond Borders
445 Union Blvd., Suite 105
Lakewood, CO 80228
303.989.7982

www.HealingBeyondBorders.org

© 2004 Healing Touch International, Inc. All Rights Reserved.

relaxing ... calming ... energizing

What is Healing Touch?
Healing Touch is a relaxing nurturing energy therapy. Gentle touch assists in balancing your physical, mental, emotional and spiritual well-being. Healing Touch works with your energy field to support your natural ability to heal. It is safe for all ages and works in harmony with standard medical care.

How can Healing Touch benefit you?

- Calming anxiety/depression
- Decreasing pain
- Strengthening the immune system
- Enhancing recovery from surgery
- Complementing care for neck & back problems
- Deepening spiritual connection
- Supporting cancer care
- Creating a sense of well-being
- Easing acute & chronic conditions

Healing Touch research suggests that there are many benefits. Individual experiences will vary.

Where is Healing Touch Used?
Healing Touch is used in a wide variety of settings including hospitals, long term care facilities, private practices, hospices, and spas. Janet Manning, RN, founded Healing Touch in 1994 as a continuing education program for nurses, other health care professionals and lay persons. Today Healing Touch has spread throughout the world and is taught in universities, medical and nursing schools and other settings internationally.

Who are Certified Healing Touch Practitioners?
The Certified Healing Touch Practitioner (CHTP) credential is widely recognized as a energy therapy training. Look for the CHTP credential to assure the highest standards. All CHTPs:

- Complete a rigorous training and certification program
- Abide by a professional Code of Ethics and Standards of Practice

"My pain level dropped from unbearable to manageable after just one session!"
— Marilyn Cummings, Chronic pain sufferer

www.HealingBeyondBorders.org

Announcing Kooper Daniel

happiest
HOLIDAYS

THE ANDERSON FAMILY
sean, kassi, kooper & koda

*Born to Sean and Kassi Anderson
on December 7th at 7:15pm
at the Castle Rock Adventist Hospital.*

*He weighed 7 lbs 13 oz and is the joy of
our lives! He arrived just in time for the
holidays to meet and greet our families!*

Integrative Health Care

The Dawn of A New Day for Integrative Holistic Medicine

by Kimberly Gray RN, HN-BC, LMT, CHTP/I

On November 2, 2013, a group of physicians and others interested in holistic and integrative care, descended upon the Vinoy Renaissance St. Petersburg Resort in St. Petersburg, Florida, eager to learn and network at the 14th Annual Integrative Medicine Conference. The conference was held collaboratively by the Scripps Center for Integrative Medicine and The American Board of Integrative Holistic Medicine (ABIH).

of Scripps Center for Integrative Medicine, Mimi Guarneri, MD, FACC, ABIHM President and Rauni Prittinen King RN, MIH, HNB-BC, CHTP/I, which set the tone for the inspirational and empowering week of learning and sharing.



Healing Beyond Borders Board of Directors representatives Rauni Prittinen King, Denise DeForest and Kimberly Gray

Of the 533 participants, 453 were MD's, all eager to learn how to embrace a more holistic approach to the care they provide, within a strongly influenced allopathic system. The comprehensive week-long educational course included evidence-based integrative holistic medicine concepts and modalities, provided by leading experts. Objectives included empowering an understanding of the importance of treating the whole person, mind-body-spirit, the value of a physician/patient partnership in improving health as well as establishing a network of like-minded practitioners from various disciplines and geographic areas. A pre-conference symposium called *Bringing Integrative Medicine to Your Practice and Health Care System* was led by founders

Sequestered away from the bustle of educational offerings, in a large ballroom centered at the entrance of the beautiful, historical hotel, was a large area of exhibitors, positioned to share how they could support MDs in providing holistic services. Upon entering the exhibitor area, in front and center, the newly unveiled display for Healing Beyond Borders invited participants in to continue their exploration of how the work of Healing Touch could support the people they serve.

The booth was attended by Healing Beyond Borders Board of Director members, Rauni Prittinen King, Kimberly Gray and Denise DeForest Pastoor, all nurses. Throughout the week, conversations with participants at the booth, inspired, educated and enlightened them to the

power and efficacy of the presence and intention that are the primary factors in the Healing Touch work. In conjunction with the Healing Beyond Borders booth we were overwhelmed with gratitude for a group of Healing Touch volunteers from the Tampa Bay area who came daily to provide Healing Touch sessions to over 100 participants during breaks and lunch. These wonderful volunteers gifted participants with an opportunity to experience a Healing Touch session.

On Wednesday November 6th, Dr. Guarneri held a focused track educational experience entitled "Mind-Body-Spirit Medicine". The event was initiated with

continued on page 17

Integrative Health Care cont...

an intriguing presentation prior to a break. Upon returning from the break, the workshop room had been transformed into a beautiful, sacred, healing room with dimmed lights, aromatherapy via incense, and a labyrinth in the center of a circle of approximately 20 chairs. Each participant entered the space, with a sense of awareness of the sacredness of this moment. Each person had the opportunity to receive a blessing prior to walking the labyrinth, sit in the resonance of a chant, receive a Healing Touch mind clearing, provided by a group of 20 Healing Touch volunteers, and to have a meditative experience prior to the completion. For many participants, this was the first time they had ever experienced the power of holistic practices as healing modalities.

Just when one thought the experience could not get any more auspicious, Mimi Guarneri MD announced changes in the integrative medicine physician's board certification, with American Board of Physician Specialties (ABPS) creating integrative medicine as a physician specialty in 2014. The current ABIHM is going to continue to focus on holistic integrative medicine education for all healthcare providers, nationally and internationally. In addition, they will form a political action committee to champion their focus in the government. The new organization will be called the Academy of Integrative Health and Medicine (AIHM).

Healing Beyond Borders Board of Director and Treasurer, Rauni Prittinen King will be providing leadership and a voice for holistic nursing in the meetings that are being held to develop this initiative. It is an honor that Healing Touch as a biofield modality will be represented during the developmental stages of this important organization.

As a new year is upon us, it is very apparent that the provision of healthcare/medicine is at the dawn of a new era, where it has become evident that healthcare providers must partner with their patients and work with them as a whole person. With the advent of the

AIHM, healthcare providers of many educational backgrounds and levels are being invited to share in the common vision and theme of holistic and integrative healthcare. This requires courageous change at every level, personally, professionally and organizationally, to release beliefs that hold one in the past. As an or-



ganization, Healing Beyond Borders is so honored to be part of this change and evolution in the way healthcare is delivered, of honoring the present and looking to a future of hope and expansion for sharing Healing Love and Light worldwide.



Mimi Guarneri MD (1st row, 3rd from left) with Healing Beyond Borders Board of Directors representatives and group of Tampa Bay Healing Touch volunteers

Practitioner Perspective

Healing Touch: It's Not What I Do, It's Who I Am

by Betz McKeown, CHHC, CHTP

For as long as I can remember, I've been doing healing work. As a child, I would give friends and family members shoulder rubs and foot massages. I loved watching my "clients" close their eyes, sigh deeply, relax, maybe smile slightly. Even as a young'un, I would feel deeply satisfied and grateful for the opportunity to make someone's day just a bit lighter.

Later, as a teen and young adult, I was the person with a wide shoulder, available for most anyone to cry on. Apparently folks felt I had a gift for listening intently and without judgment; they would leave a "session" feeling affirmed and deeply heard, holding a new perspective that they found for themselves just from the gift of being able to talk about it.

I took my first official healing class, Reiki I, over 30 years ago. About that same time, I first heard about a school for massage therapy, and I remember feeling amazed that I could actually go to school to learn massage and be PAID to do something that came so easily to me and gave me such satisfaction! Who knew??

It was a few more years before I actually made it to massage school. Finally, I had found my calling, and I loved every minute of it – the classes, the instructors, my classmates, the long hours in the evenings and weekends studying and practicing and breathing all things healing. I practiced massage for 10 years before my wrists said, "Enough." Time for whatever was next.

From there, I worked in various capacities with holistic health centers, health practitioners and non-profits, always finding a way to help heal my corner of the world. Even if I wasn't specifically doing healing work, I was supporting people and agencies that were working to make the world a better place.

Then four years ago, my mom was dying and in a hospice care facility. It was there that I was introduced to Healing Touch – my mother's parting gift to me. My passion for hands-on healing was revived. Within three months of her passing, I was pleasantly surprised to discover that there was a Healing Touch instructor in my area and immediately enrolled in a Level 1 class.

Once I made the decision that Healing Touch was the next step on my life's path, the universe moved to has-

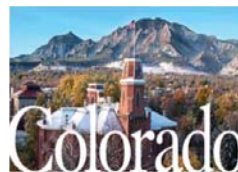
ten my journey. I took Level 4 just five months after my first class and was certified a year and a half later. Since then, I've also been trained and certified as a holistic health coach, combining years of training and experience into a truly integrative wellness practice.

I now feel it's time to take my life's work to the next level and teach Healing Touch. I'm excited about the opportunity to share not just the technique but the soul, compassion and transformative power that is Healing Touch. I know from experience that healing work is not simply an action, it's a state of being.

I've spent a lifetime immersed in healing energy; assisting others in their healing process as well as doing plenty of my own healing. For me, healing work is a spiritual calling, something that informs every thought and every action, every moment of every day. It's the Light that fills me, surrounds me, emanates from me. It's the space that I hold for anybody with whom I come in contact. It's the "not my will but Thine" that's done in me and through me. Healing Touch is not just what I do; it's the heart and spirit of who I am.

Biography: Betz McKeown, CHHC, CHTP, is the founder of Your Radiant Life, a Wholistic Health & Lifestyle Coaching practice. She and her husband, Frank Chodl, are dedicated to healing the world, one person and one class at a time.





SAVE THE DATES

Healing Beyond Borders

18th Annual Energy Healing Conference & Instructor Meeting “Healing Beyond Borders”

September 4 - 7, 2014

Pre-Conference September 3 - 4, 2014

Cheyenne Mountain Resort

Colorado Springs, Colorado

Keep Watching Our Website for Updated Information,
Presenters & Call for Proposals
www.HealingBeyondBorders.org

~ Remember to Reserve Your Lodging Now ~



2014 Keynote Speaker ~ Gregg Braden

Brilliant and insightful...I see Gregg Braden as one of our great visionaries.
—Dr. Wayne Dyer, author of *The Power of Intention*

Gregg Braden is a rare blend of scientist, visionary and scholar with the ability to speak to our minds, while touching the wisdom of our hearts.
—Dr. Deepak Chopra, author of *How To Know God*

New York Times best selling author Gregg Braden is internationally renowned as a pioneer in bridging science, ancient wisdom and the real world! Following a successful career as a **Computer Geologist** for *Phillips Petroleum* during the 1970's energy crisis, he worked as a **Senior Computer Systems Designer** with *Martin Marietta Defense Systems* during the last years of the Cold War. In 1991 he became **The First Technical Operations Manager** for *Cisco Systems*.

- For more than 27 years Gregg has explored high mountain villages, remote monasteries, and forgotten texts to merge their timeless secrets with the best science of today. His discoveries are now shared in 33 countries and 38 languages through such paradigm-inspiring books as: *The God Code*, *The Divine Matrix*, *Fractal Time*, and his newest, *Deep Truth*. His 2007 best seller, *The Divine Matrix*, was recently selected as the source for the made-for-television feature, “*Entanglement*,” and is now a textbook for college level courses exploring new discoveries of science and our relationship to the world.
- Gregg is an active member of several leadership organizations, including the *Evolutionary Leadership* think tank, founded by Deepak Chopra in 2008, and has received numerous awards in recognition of his insights and innovation.
- Gregg's work has been shared on every continent of the world and in recent years he has presented his seminars and trainings to Fortune 500 companies, the U.S. military, international businesses and is now featured in media specials on the History Channel, the Discovery Channel, National Geographic, ABC and NBC.

PAID ADVERTISING

~ Advertise your business in the next Perspectives in Healing ~ Ads offered in all sizes
~ Pricing as low as \$50 per issue * Contact the Healing Beyond Borders office at 303-989-7982

Need CNEs / Contact Hours ?

Desire a Magical, Meaningful
Experience Getting Them?



**Lotus Flower Forgiveness
& Manifesting Retreat**
(30 CNEs / CEes)

Sacred Partnership Workshop:

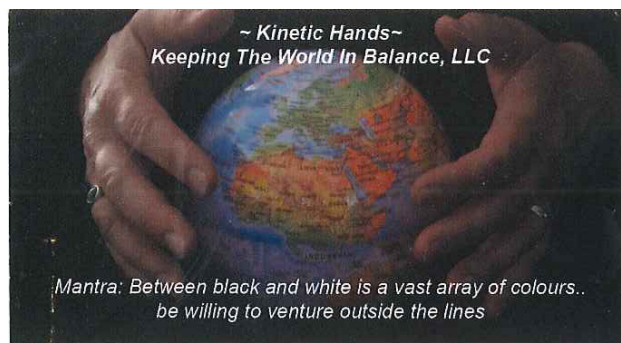
Tools to Integrate
Body • Mind • Spirit
(12 CNEs / CEes)



2013 Come to
SEDONA – Tucson
Atlanta/Alabama, Minnesota!



www.EllieDrew.com



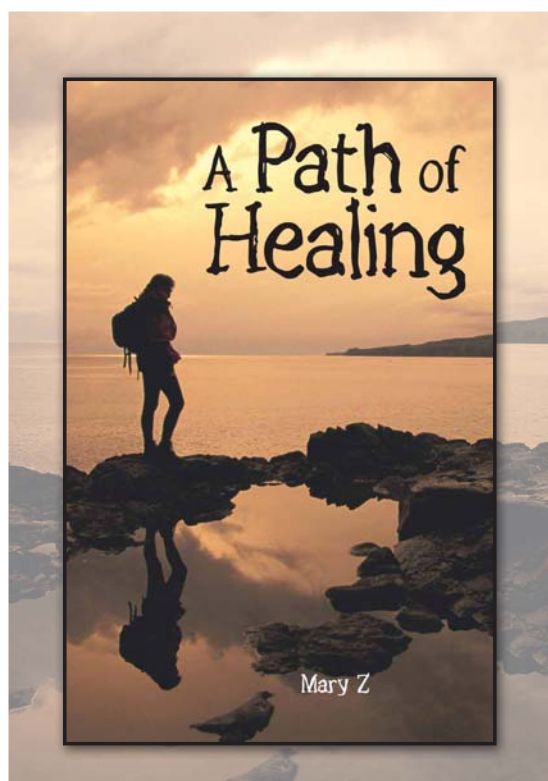
~Kinetic Hands~ Keeping the World in Balance, LLC

A HIPAA Certified Healing Touch Electronic Medical Record
Schedule Your Clients
Register Client Information
Complete Documentation of HT Session
Bill and Keep Track of Payments
Document Education Progress
Founder: Laurie Straw CHTP, FNP-C
www.kinetichands.com laurie@kinetichands.com

Healing Touch Trip to South Africa April 23 - May 7, 2014

Come and take Healing Touch Level 4 or Level 5 in the Kalahari Region of South Africa in the midst of The Khomani San, Bushman community and Kagalagadi Transfrontier Wild Game Park. Or come along for this immersion into Indigenous culture as well as the delights of the glorious and diverse Cape Town and peninsula at the tip of the African continent.

Inquiries to: Mary Frost, RN, CHTP/I
Tothealt@aol.com
Mary J. Frost, RN, BSN, MS
Certified Holistic Nurse,
Certified Healing Touch Practitioner & Instructor



HTI Conference 2013



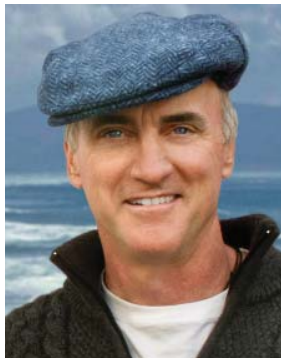
Workshop Presenters

Healing Touch Buddies, Inc.

A Non-Profit Organization Providing Energy Therapy
for Care and Comfort to People with Breast Cancer

Betty Ann Baker, Co-Founder and Executive Director
13901 US Hwy 1, Suite 10, Juno Beach, FL 33408
Tel 561-741-1671 Email: htbuddiesinc@cs.com
Website: <http://www.healingtouchbuddies.org>

Holistic Stress Management Workshop



This certification workshop is designed to train health educators with an interest and background in "Holistic Stress Management" to teach, direct or facilitate quality presentations/workshops at their worksite. The focus of this workshop is holistic -- honoring the integration, balance and harmony of mind, body, spirit and emotions for optimal wellbeing. This special comprehensive workshop is an endorsed program through the American Holistic Nurses Association and offers 54 CE's for nurses. Below are links for more information.

Instructor: Brian Luke Seaward, PhD
Class: Holistic Stress Management Workshop
Location: Boulder, Colorado
Dates: May 15-18, 2014

Link for Workshop Brochure:
www.brianlukeseaward.com/downloads/May_Boulder_HSMW_Brochure.pdf
To Register Online:
www.brianlukeseaward.com

Spirit of Ireland Tour A Healing Journey

Any and all people interested in a spiritual adventure to the Emerald Isle, specifically those who wish to travel with like-minded companions and healers interested in participating in a magical journey of Celtic spirituality, Celtic music and Celtic history. This special comprehensive workshop is an endorsed program through the American Holistic Nurses Association and offers 6 CE's for nurses. Below are links for more information.

Instructor: Brian Luke Seaward, PhD
Class: Spirit of Ireland 2014
Location: Emerald Isle, Ireland
Dates: June 20-29, 2014

Link for Workshop Brochure:
www.brianlukeseaward.com/downloads/2014_Spirit_of_Ireland_Brochure.pdf
To Register Online:
www.brianlukeseaward.com

Paid Advertisement



Thank You to Those Who Granted to The Silent Auction

Alexandra Jonsson
 Anne Day
 Arden Wilken – Inner Sound
 Barbara Reinish
 Betty Ann Baker – Healing Touch Buddies
 Christine Stewart
 David Rabinowitsch
 Deb Goldberg
 Deborah Belz
 Denise Pastoor
 Donna Reis – ColorVision
 Elizabeth Yelen – Whispering Tree
 Elli Haffey
 Evie Caprel
 Ginny Mulhall
 Gloria Winterlin
 Healing Touch Oklahoma
 Jan Tait
 Judy Turner
 Kathleen Adams
 Linda Holmes
 Lisa Hickey
 Liz Flynn
 Marilyn Blair
 Marilyn Brodie
 Mary & Katie O'Neill – Healing Connections
 Mary Szczepanski
 Mary-Cathrine Campbell
 Nancy Russ – CroneStones
 Patricia Dool
 Patricia Welch
 Relax Health and Tone
 Robin Goff
 Shelley Poland
 Stacey Quade – Energy for Life Connection
 Sue Hess
 Tami Briggs
 Tom Schommer
 Vicki Nelson – Vicki's Boutique
 Yuthok Tibetan Treasure
 Zoe deNegri – Shamana

Community Outreach and Affiliate Organizations

Beyond Borders - 2013 Australasian Gathering

by Lisa Anselme RN, BLS, HN-BC, CHTP, CHTI, Executive Director, Healing Beyond Borders



Shortly after departing our own 17th Annual Energy Healing Conference in Colorado, I departed for New Zealand to be a presenter, Board of Directors ambassador and participant in the 2013 Australasian Gathering in **Akaroa** in the South Island. With layovers in

Wales, **Susan Ashton**, and **Betty Green** from Australia and **Debbie Carter** (our hostess) and **Wendy Risdon** from New Zealand. Now it was becoming a gathering and a festive one at that! Annis, Jenny and I were graciously hosted in Annis's friend's home upon the hill overlooking the bay.



Los Angeles and Auckland, I arrived in Christchurch 24 hours later, to be greeted by a smiling **Annis Parker**. I felt much like a foreign exchange student who had just been picked up by their gracious host family! We first toured Christchurch; although two years have passed, the devastation of the 2011 earthquake remains looming and prominent. The land felt quite "heart wrenched" and yet, the spirit of the people that live here is remarkable. College art students have claimed many of the areas of excavation and have turned them into exquisite pieces of art...the botanical gardens have been restored, flowering plants hang suspended from the open beams in partially destroyed and now condemned buildings. The trees exude such a life force that one wonders what was upended in the quake that is nourishing their spirits. Annis remarked that they have thrived post quake. After picking up a fellow colleague from Australia, we departed for Akaroa, the site of the first Australasia conference to be hosted in New Zealand. I can't imagine a lovelier place to host a conference. Beautiful Akaroa is such an exquisite, resort and harbor town surrounded by craggy volcanic hills! It is renowned for its Hector's Dolphins, unique to New Zealand, that swim in the harbor.

The conference was held along the harbor shore within the second floor rotunda room of the boat house, overlooking the bay and its many ships. Within moments of our arrival, we discovered **Rosalie van Aken**, **Jenny**

Day 1 – Preconference with Annis Parker, RN, CHTP/I, "*The Natural World – Animal/Human Connection*". She shared energetic tools to use for ourselves in becoming a presence that is one of respect upon the natural world. The water was so rough in the bay and ocean, that we were unable to go out upon the boat as planned. Instead, we learned a great deal about marine mammals, their behaviors, and their energetic world. That evening, we departed to **Onuku Marae**,



where we were welcomed onto the land by **Rev. Maurice Manawaroa Gray**, Upoko Runaka (tribal leader) of Te Runaka ki Otautahi o Kai Tahu (the Christchurch tribal council). We then gathered for Hangi (community meal) and then Rev. Maurice shared Maori wisdom, culture and reflection followed by offering music and song.

Day 2 - Conference leaders from Australia and New Zealand welcomed us to the opening of conference through the sharing of a talking stone among the attendees. There were about 50 participants, approximately 30 from New Zealand, 20 from Australia and myself. **Donna Steel**, Contemporary NZ Artist, Certified Golden Artist Educator, introduced the group to group

continued on page 19

Community Outreach cont...

mandala creation through the weekend, using the medium of acrylic paint upon wooden tiles. **Jane Carter**



RN, Naturopath, CHTP gave a thought provoking and very hot topic keynote entitled “*Epigenetic Pathways-how do we control our genes vs. our genes controlling us?*” After tea break (smile), **Wendy Risdon** RN, CHTP presented her keynote entitled “*Take My Hand*” that reviewed a pilot study that she had engaged in using techniques of relaxation for anxiety and depression in youth. **Kitty Kingsbury** RN, CHTP/I provided meditation and spoke about unconditional love. **Dr. Rosalie van Aken**, RN, PhD, CHTP/I, **Annis Parker** RN, CHTP/I, **Berylla Jones** CHTP, President New Zealand, **Betty Green**, President, Australia, and myself sat on a panel for Q & A from the audience and practitioners, and representing our 3 respective organizations. This was followed by a review course for practitioners and students with **Susan Ashton** and Rosalie van Aken.

That evening, a banquet dinner was held at The Trading Room and the energy was festive, sparkling, collaborative, and once again, welcoming. Annis, Rosalie and I were gifted with fantastic hats (Elephant, Owl and Moose, respectively)! Annis was presented with an exquisite sculpture of the New Zealand logo in recognition of her work and leadership in Healing Touch New Zealand. Later, we planted it in her garden at her home.

Our final day of the gathering, **Robin Kerr** NDA, NZRA, ACC Provider Acupuncturist, Flower Essence Practitioner and former obstetrical nurse presented a fascinating and engaging keynote on the *Anatomy and Spirit of the heart*, so very relevant to our work. Following tea, **Sam McSorley** PG Dip Hlth Sc. BHSc, Dip. Clinical Herbal Medicine Herbalist presented “*Strategies for Creating a Healing Community*”, in which she shared how she organized a healing event of a massive scale across many complementary disciplines, following the earthquake. It spoke of how one person with a vision and willingness to step forward in service is capable of making amazing things happen. The final keynote was my presentation of communities in action; and which explored transformative world change through the energetic work that starts with ourselves through pattern

recognition and energetic awareness and expands to the greater community and world, via the ripple effect, entanglement theory, and *communitas*. Our closing included the unveiling of the composite mandala that was created during the gathering.

Although there was such rich sharing of information, the



ship, conversation, and joy that permeated this event. The Healing Touch communities in Australia and New Zealand are such rich treasures comprised of beautiful individuals with great hearts. It was truly a privilege to be there and I will always recall and carry with me the hope, courage, strength and grace of these wonderful people.

Before returning to Christchurch, Annis and I traveled to **Wanaka**, and spent several days in the heart of the mountains on Lake Wanaka in the gracious home of her brother, Peter and his wife, Naia. I was struck by how the energy field of the lake and surrounding moun-



tains was so vibrant and intact; it very much resembled the way that I recalled the Rocky Mountains to appear when I was a child. It was definitely a contrast to how I perceive our Colorado mountains, now, and returned home determined to ensure that they restore to their previous luminosity.

During my flight home, I reflected upon this gathering, the land, the people, and essentially the purpose of it all. I returned home absolutely convinced that this work is traveling beyond borders of country, topography, culture, language, and understanding; it is moving trans-planetary and beyond, into a consciousness of light. I am most grateful for this glimpse into where we are heading.

Reflection

What Are We Actually Doing?

by Terry Sparks JD, M.Div., BCC, CHTP/I



Stray thoughts pop into my head quite a bit. Many are truly strays, seeking a hiding place from the Universe's stray dog catcher. Occasionally one is worth pondering. You can decide in which category the thought below belongs. While Healing Touch is not religiously based, I am going to use a widely-held religious belief to flesh out this stray thought. Please read the term "God" through whatever understanding of this speaks to you at this point in your life.

We work with patterns when we do Healing Touch. That's an obvious statement that is introduced in Level 1. But it occurred to me that we work with patterns that are embedded in us when we were created/came into being/landed on this planet. All we are doing in Healing Touch is allowing/enabling/inviting these original patterns to release into our lives now.

Many people believe that we are created according to very good patterns. Sometimes, like wisdom teeth that never descend, these patterns don't manifest in our lives. Sometimes, what the patterns produce becomes corrupted, like a Windows file that we forwarded one too many times. The pattern is still there somewhere, but it is not coming out correctly any longer. Sometimes the pattern doesn't come through into our lives very well, due to years of addiction, physical or emotional abuse, or trauma. But in all these scenarios, the very good pattern is still in place. This is the point of talking about the "blueprint" of the body in the fifth level of the energy field; the pattern for the physical body is located there and is still whole regardless of the condition of the actual physical body.

Another way to look at these very good patterns comes from one of the creation stories in the book of Genesis, which Jews, Christians and Muslims all honor:

"Then God said, 'Let us make man in our image, in our likeness, and let them rule over the fish of the sea and the birds of the air, over the livestock, over all the earth, and over all the creatures that move along the ground.' So God created man in his own image, in the image of God he created him; male and female he created them...God saw all that he had made, and it was very good. And there was evening, and there

was morning - the sixth day."

-Gen. 1: 26-27; 31, New International Version translation

Several things in this passage stand out. First, God talks

about making humankind in "our" image. Most people pretend the "our" isn't there because it opens up too many really messy questions. Next, the Hebrew word for "human", here translated "man", is "adam". It means "human", both male and female. And no, God is not male, but incorporates both male and female. Probably the most striking thing about this passage is that it embodies a worldview in which we are created in the image of God. To flesh out the stray thought, the same patterns are embedded in us that are embedded in God. And God refers to all the creation as "very good". The patterns that are in us are "very good". Whatever your religious preference, worldview or Higher Power, this is worth thinking about.

I think this says that the "very good" "image of God" patterns are truly embedded in each of us. It could be that what we do when we do Healing Touch is release these patterns to work freely within us. Our physical body, our spirit, our emotional body, and our mind all know what to do with the patterns. The tiny embryo that was "us" knew what to do with these patterns when we were forming in our mother's womb, so I assume we still know what to do with them now. I don't fully understand how we become disconnected from these patterns, but we inevitably do. Healing Touch may provide a nurturing environment in which we can reconnect with these patterns, allowing them to release and manifest in our lives.

Doing Healing Touch by inviting a person's "very good" sciatic nerve pattern to emerge and manifest beats struggling to repair something that's been damaged for over twenty years. Allowing a "very good" pattern to emerge is a much lighter and more joyful way to work than trying to make something move that doesn't want to move. If we are enabling a pattern to emerge and manifest, that's a good "enabling".

I do not know the creation story counterparts in Hindu-

continued on page 21

Educational Insights

Healing Beyond Borders

Educating and Certifying the Healing Touch™

by Barb Schommer RN, MS, CHTP/I, Education Committee Chair



I am so excited about our re-branding and new name. It brings with it such high energy and opportunity!! The logo itself is a wonderful mandala which has the capacity to carry one inward into the depths of the lotus (and ourselves) as well as the capacity to carry us outward into the world. I am grateful to the Board of Directors for their time and loving energy in creating this new step forward.

As with anything new, there are twinges for “the way it was”. The something “old” something “new” phenomenon might help frame this organizational change. The something old is our standardized curriculum, Janet’s legacy. A curriculum that is still being taught the way Janet envisioned it. Classes have been and will be taught using the same objectives and content through all 5 Levels of the Healing Touch curriculum. It is these



objectives and core content which became the core of Certification as a Healing Touch Practitioner. This certification, the gold and now platinum standard,

remains the same, and those who complete the process are still Certified Healing Touch Practitioners. This is the same work that Janet loved, taught, and practiced. Nothing about that work has changed as we teach and practice Healing Touch.

What we now have is a new name and with it new energy. The energy in the logo and name are incredible. I held one of the large round magnets with the lotus logo on it, and the energy and vibration that ran through me were incredible! I immediately purchased 10 magnets at conference, and have been gifting them to people ever since. During Healing Touch classes, we have talked about the name change, and students have been positive about this change. Their comments range from “great idea” to “wow, this is about energy beyond the borders of Healing Touch by itself –

it is BIG.” What I am sensing is that our connection with other energies and energy therapies is growing by leaps and bounds.

Life goes on in our organization, but it goes on with a renewed vitality and vigor; a renewed opportunity to invite more people into the work. We claim an opportunity to expand beyond borders, either real or artificial – again inviting people to discover and unfold into this energy therapy work. Think of all the borders we can travel beyond – country borders, community borders, racial borders, cultural borders, state borders, gender borders, preference borders, individual and collective borders, the list is endless. May the re-branding and new name and logo help all of us think beyond whatever borders have limited us, and move into an expansion of energy that is limitless.

Cheers to the old – HTI Healing Touch Certificate Program standardized curriculum and course content! And cheers to the new **Healing Beyond Borders**, Educating and Certifying the Healing Touch™ as its overlighting agency.!!!



What Are We Actually Doing? cont...

ism or Buddhism, or in other systems of thought well enough to speak to them. And I apologize for the sexist language in the Genesis passage. I used the New International Version translation because it caught the gist of what I wanted to emphasize. But if the idea that what we do in Healing Touch is release the very good patterns within us is a stray thought that intrigues you, please add to it, work with it, play with it. Consider, “beyond borders” also refers to thinking about things in new ways. If this is a stray thought that needs to go to the pound, then let it go there.

Verses from the Bible taken from the HOLY BIBLE: NEW INTERNATIONAL VERSION (c) 1978 by the New York International Bible Society, used by permission of Zondervan Bible Publishers.

Energy Research

Expanding Our Vision

Healing Touch Research at Conference and Beyond

by Joel G. Anderson, PhD, HTI-P, HBB Board of Directors and Research Director



Many exciting things happened at conference this year related to research. So many folks came up to me asking questions about how to do research, how to get connected to research studies underway or in the works, and how best to incorporate research into their practice. It was very exciting to me to see and hear the enthusiasm surrounding research. It gives even more support, in my mind, to importance of research in supporting the work of Healing Touch.

During conference, the Research Committee met in person to begin the work of the coming year, the major focus of which is a revision of the current Research Survey. The Research Committee and I will be revising this booklet into a succinct and usable document that we hope will promote and support research for the many stakeholders involved. It is no easy task, but one about which the members of the committee are passionate. I am fortunate to chair a committee of dedicated and enthusiastic practitioners are researchers, including Der-Fa Lu, PhD, CHTP, from the University of Iowa; Nancy Strybol, RN, CHTP/I, from the Netherlands; Sue Hess, PhD, CHTP, from the Roswell Park Cancer Institute; and Lucrezia Mangione, MA, LGPC, CMT, CHTP/I, from Silver Springs, Maryland. Each is or has been involved in various research and service projects at different levels. All of us were present during the research session at conference as well.

During the research session, I gave an overview of what is meant by evidence-based practice, how that concept is supported by research, and how one uses a strategy for assessing the levels of evidence. Sue Hess spoke a little more in depth about formulating a research question and what is involved in writing up a funding proposal. Finally, Dr. Laura Hart from the University of Iowa presented research findings from three pilot research studies led by Der-Fa Lu. Co-investi-

gators included Laura Hart, Hyunkyung Oh and Susan Lutgendorf.

In the first study, the effects of Healing Touch on the pain and mobility in persons with osteoarthritis were examined. In patients with arthritis, those who received Healing Touch had a significant decrease in pain, joint stiffness and depression compared to a group of patients who received a friendly visit (to control for the aspect of presence). Those in the Healing Touch group also had a significant increase in knee flexion, extension and extension lag compared to controls. Qualitatively, it was observed that persons with osteoarthritis who received Healing Touch had a reduction in the use of pain medications and an increase in mobility. These findings have been recently published in *Geriatric Nursing* (Vol. 34, Issue 4, July 2013)



In the second study, patients with dementia who received Healing Touch showed a reversal in cognitive decline compared to those in the control group. Persons in the Healing Touch group also had improvements in measures of mood versus the controls. These findings also have been recently published in *Geriatric Nursing* (Vol.34, Issue 6, Nov. 2013). In the third study, the use of Healing Touch in persons undergoing stem cell transplant were explored. Those patients who received Healing Touch had significant improvements in quality of life measures. Patients receiving Healing Touch showed non-significant improvements in terms of measures related to stem cell transplant.

The Research Committee and I are already beginning to think about and plan the research session at next year's conference. Our goal is to continue to make this portion of the conference program more scholarly. More details will be forthcoming in the next issue of *Perspectives in Healing*. We also are working on a potential session geared more specifically to writing a research proposal, what is involved in that process and potentially offering consultations with members of the Research Committee to individuals working on proposals. Stay tuned!

Words of Wisdom

TIME

by Diane Wind Wardell PhD, RN, WHNP-BC, AHN-BC, CHTP/I



In Janet's journals from the first decade of her writings from 1980-1990, time is mentioned very frequently. For Janet, it was *time* for reflection, understanding, gratitude, rest, reading, studying, self-expression and exploration, time-travel, and spiritual encounters, to name a few of her references to time. It was a general awakening of her talents and gifts that those practitioners engaged in offering Healing Touch find in their own personal journeys. Janet summed up what this meant to her in 1984 when she wrote: "I am different. I am unique. I will not need a mold, nor will I conform. I am a miracle" ¹ (p.69).

Spending time in understanding spiritual processes, the hard work of truly looking at oneself provided the foundation for healing work. Janet said, "This time of my life is a grounding and preparation for time to come. It is exciting to be opening up my mind and my possibilities. It's like a leading edge"¹ (p.67). Janet was often made aware of the importance of being in the present moment as she moved more strongly into healing work.

This decade truly focused on Janet's personal development.

The next decade (1990-2000) then moves into the foundational aspects of classes and organizational development. It is during this time that Janet's writings

offer more direction on how to build and maintain healing work. Perspective seems to take over from time as the focus of her guidance. She is advised that: "The difficulty comes in only being able to witness moments and not seeing the overall picture from the distance. What seems insurmountable in the moment is only a minor obstacle in our perceptions; thus the importance of moving forward daily, day by day with the choices and decisions"².

It is often difficult to get the "big picture" as we are more comfortable with "what is" than what it "will be". That is why it is often wise to place trust in a collective body who honors wisdom, in which you have a voice. By doing so, one is often able to move to a more accepting position of change.

References.

1. Wardell, DW. (2005). *Healer's Path of Janet Mentgen: The early days*. Unpublished manuscript.
2. Wardell, D.W. (2006). *Janet's Journals: Wisdom for today*. Unpublished Manuscript.

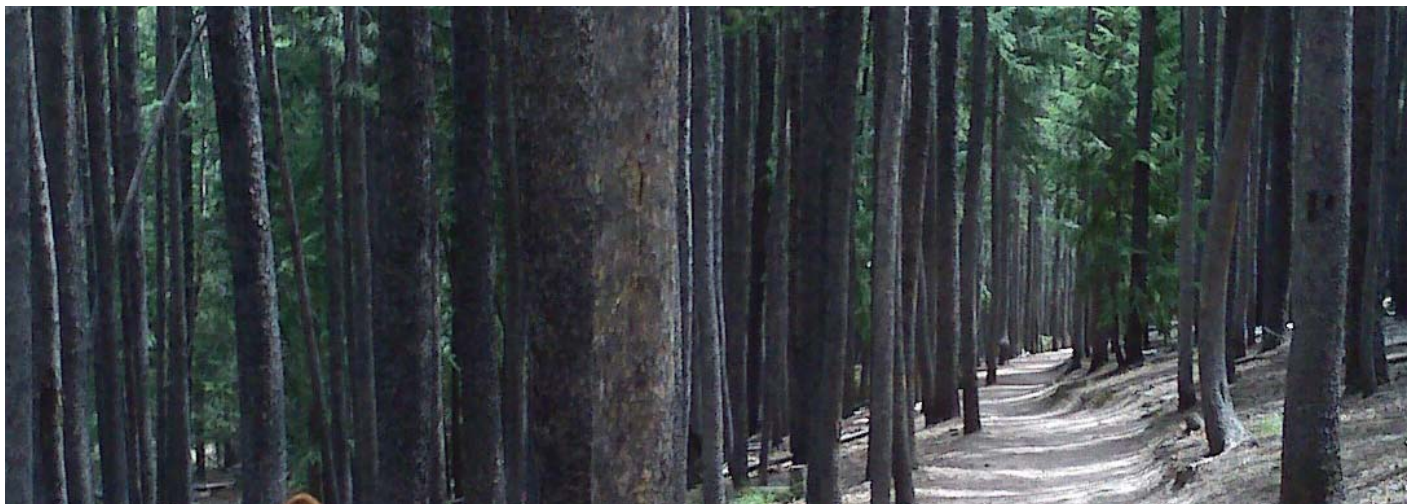


Photo: *The Forest or the Trees*

Grace and Intention

In Memory of Miki Heyne, CHTP

Miki Heyne CHTP
1957 - 2013

Miki Heyne passed as gracefully as she lived. Her next adventure has begun. Miki has been a healing presence in our Healing Touch of Kansas City community and has shared her beautiful spirit, her wisdom, her compassion, and unconditional love for all who have been a part of her life. Miki showed us how to deal with cancer with an amazing calmness and peace even in the midst of intense pain. Miki was able to celebrate her 56th birthday on Thanksgiving Day. Her husband Wallie Winholtz has shared information regarding Miki's December 21 memorial service and has invited you to log on to his blog which has described his healing journey with Miki. *Wallie: My Zen from The Heart*

<http://walliebloggin.blogspot.com>

Appreciation: The Healing Touch team who provided daily support to Miki from the early beginnings of her illness are deeply appreciated for the dedication and continual support throughout her illness. Miki was so appreciative of everything people were doing for her and Wallie has let you know that you are truly heroes. I have heard Janet Mentgen ask the question: Who will do your last chakra spread? One of our team was able to do Miki's last chakra spread on the day she passed. May we each be so fortunate to have a colleague do our Chakra spread when our time comes. Thank you, Healing Touch colleagues, for your kind and generous service.

Thank you Miki for so beautifully showing us the way.

Jody Hueschen



Grace and Intention

*In Memory of
Patricia (Patty) McClellan, RN*

Patricia (Patty) McClellan, RN, HTI-PA
Oct 5, 1942 - Dec 1, 2013

Patricia (Patty) McClellan, died on December 2, 2013, after a long illness. She was 71. Patty was an avid student of Healing Touch, attending many Level 1-4 workshops as student or helper. She attended many Healing Touch International annual conferences until her health prohibited travel. Educationally prepared as a nurse and mental health counselor, Patty volunteered at an Omaha hospital for many years, providing a listening ear to patients and Healing Touch as needed. She loved to receive Healing Touch and was willing to share treatments with others in the community. She will be very much missed by family, many friends, and members of the Eastern Nebraska Healing Touch Community. ~ Mary Megel



2013 Annual International Conference



2013 Annual International Conference



2013 Annual International Conference



Pinning Newly Certified Practitioners & Instructors and 5, 10, 15, 20 Year Instructor Recognition



Healing Beyond Borders Professional Development Series and Advanced Practice Offerings

Healing Beyond Borders Professional Development Series classes offer advanced professional development of the healer that can be used for continuing education in nursing and massage and also can be applied to Healing Beyond Borders Certification and Renewal. These classes are open to any individuals interested in an in-depth understanding of healing-related work. Some pre-requisites apply. Please watch the Healing Beyond Borders Website for dates and class coordinator contact information. **For more information about these classes:** Visit www.healingbeyondborders.org, Select "Education", then "Professional Development Classes". **If you wish to bring one of these classes to your area:** please contact the coordinator or instructor to learn how this may be accomplished.

Heart Centered Living

Living through the heart center has many advantages. It keeps one focused in present time and keeps one's relationships balanced and whole. It helps one handle stressful situations without blame or projection and allows individuals to value self-care. Research has proven that heart centered living leads to a healthy life.

Contact: Myra Tovey at davidmyra7@msn.com

Check our website for scheduled classes
www.HealingBeyondBorders.org

Healing Disruptive Energy Patterns

Chronic pain often involves an injury that creates a pattern of "memory" that is retained within the body. Learn how to work with these energy patterns through an extensive review of the body system. **Pre-requisite** - The course is open to all experienced energy workers who desire to learn how to work with releasing disruptive energy patterns causing pain.

Contact any of the following instructors:

Anne Day at anneday7@gmail.com
Rauni Prittinen King at rking487@aol.com
Judy Turner at judithturner38@gmail.com
Diane Wardell at diane.wardell@uth.tmc.edu

Check our website for scheduled classes
www.HealingBeyondBorders.org

Energy Wisdom and Practice

Increase your repertoire of healing tools with a variety of different healing approaches that will aid in balancing the body, decrease symptoms from muscle-skeletal disorders and provide the client an opportunity for deep healing. Explore sacred geometry and the foundations of energy medicine.

Pre-requisite - This course is open to all experienced energy workers who desire to learn new healing techniques and to deepen their healing work.

Contact any of the following instructors:

Anne Day at anneday7@gmail.com
Rauni Prittinen King at rking487@aol.com
Judy Turner at judithturner38@gmail.com
Diane Wardell at diane.wardell@uth.tmc.edu

Check our website for scheduled classes
www.HealingBeyondBorders.org

Holistic Stress Management Instructor Training

The goal is to train professionals to teach, direct or facilitate the finest quality presentations/workshops at their worksite. Topics include humor therapy, art therapy, music therapy, meditation, visualization, stress & spirituality, stress & disease, energy medicine, etc...

Contact: Brian Luke Seaward at
brianlukes@cs.com

Check our website for scheduled classes
www.HealingBeyondBorders.org

Beyond Surgery Program-Bridging the Gap

This class teaches a protocol which blends Healing Touch with other integrative therapies to support your client's primary medical care. The Beyond Surgery Program is a specific protocol useful for patient support before and after surgery, chemotherapy or radiation treatments, or stressful medical procedures of any kind.

Pre-requisite - Completion of Healing Touch Level 2 (or completion of Healing Touch Level 1 with permission of instructor)

Contact: Judy Ray at JudyLynneRay@yahoo.com

Check our website for scheduled classes
www.HealingBeyondBorders.org

Journaling the Spiritual Journey and

Journaling the Healing Journey

In this two-day workshop, you will learn proven techniques and processes to chronicle the spiritual journey. These tools can be helpful whether you are facilitating others in their healing process, or taking charge of your own healing. Dress comfortably and bring a notebook or journal!

Pre-requisite - This course is open to all experienced energy workers who desire to learn new methodologies of journaling to promote optimal health and wellness.

Contact: Anne Day at AnneDay7@gmail.com

Check our website for scheduled classes
www.HealingBeyondBorders.org

Healing Touch Class Schedule 2014

These classes are recognized by the HTI Healing Touch Certificate Program; endorsed by the American Holistic Nurses Association, NCBTMB and California Board of Nursing

This listing is updated regularly; check often for classes near you!!

PROFESSIONAL DEVELOPMENT

(see web site for class summary details)

Beyond Surgery Program Training Seminar

| Date | Location | Instructor(s) | Contact | Phone | e-mail |
|-------------|------------------|-----------------|--------------------|--------------|------------------------|
| Feb 20-22 | Red Wing, MN | JL Ray / N Blue | Sarah Stinson | 651-267-3506 | stinson.sarah@mayo.edu |
| Mar 7-9 | Brevard, NC | JL Ray / N Blue | Kathy Blue | 828-577-6948 | BlueCavu527@aol.com |
| Apr 25-27 | Philadelphia, PA | JL Ray / N Blue | Penny Martin-Holly | 215-499-2412 | penstermh@verizon.net |
| May 30-Jun1 | San Diego, CA | JL Ray / N Blue | Pamela Grigg | 619-322-9552 | pamgrigg2@hotmail.com |
| Sep 12-14 | Brevard, NC | JL Ray / N Blue | Kathy Blue | 828-577-6948 | BlueCavu527@aol.com |

Energy, Wisdom & Practice

| Date | Location | Instructor(s) | Contact | Phone | e-mail |
|----------|------------------|---------------|-----------------|--------------|-----------------------|
| March 1- | Hillsborough, NC | Judy Turner | Christine Clark | 919-644-7997 | cclark@carolwoods.org |

Healing Disruptive Energy Patterns

| Date | Location | Instructor(s) | Contact | Phone | e-mail |
|----------|------------------|---------------|-----------------|--------------|-----------------------|
| March 2- | Hillsborough, NC | Judy Turner | Christine Clark | 919-644-7997 | cclark@carolwoods.org |

Heart Centered Living

| Date | Location | Instructor(s) | Contact | Phone | e-mail |
|-----------|-----------------|---------------|---------------|--------------|-------------------|
| May 2-3 | Kansas City, MO | Jody Hueschen | Jody Hueschen | 816-838-0438 | jhueschen@aol.com |
| Aug 15-16 | Kansas City, MO | Jody Hueschen | Jody Hueschen | 816-838-0438 | jhueschen@aol.com |

LEVEL 1

| Date | Location | Instructor(s) | Contact | Phone | e-mail |
|--------------|------------------------|-----------------------|-------------------------|---------------|----------------------------------|
| Jan 3-17 | Silver Springs, MD | Lucrezia Mangione | Lucrezia Mangione | 802-578-3700 | hhservice@handcraftedhealth.net |
| Jan 4-5 | Kansas City, MO | Jody Hueschen | Jody Hueschen | 816-838-0438 | jhueschen@aol.com |
| Jan 4-5 | Burlington, VT | Kathleen Scacciaferro | Kathleen Scacciaferro | 802-363-0259 | kscacciaferro@gmail.com |
| Jan 4-5 | Silver Springs, MD | Lucrezia Mangione | Lucrezia Mangione | 802-578-3700 | hhservice@handcraftedhealth.net |
| Jan 10-11 | Aberdeen, SD | Jeanne Thune | Janene Papendick | 605-622-5164 | janene.papendick@avera.org |
| Jan 11-12 | La Jolla/San Diego, CA | Trish Wragg | Haley Wragg | 760-310-1057 | wragg.patricia@scrippshealth.org |
| Jan 11-12 | Ft Lauderdale, FL | Valorie Knowlton | Marcia Gill | 954-494-2849 | marciag@bellsouth.net |
| Jan 11-12 | Indianapolis, IN | Sharon Smith | Carole Creech | 317-340-1926 | sassyroo1@yahoo.com |
| Jan 11 & 18 | Albuquerque, NM | Lisbeth Carlisle | Lisbeth Carlisle | 505-459-7358 | lisbethcarlisle@aol.com |
| Jan 18-19 | Ashland, OR | Carrie Niewenhous | Carrie Niewenhous | 303-210-3906 | cgn454@gmail.com |
| Jan 18-19 | Minneapolis, MN | Barb Schommer | Kathy Kerber | 612-863-7937 | kathryn.kerber@allina.com |
| Jan 18-19 | Burlington, VT | Kathleen Scacciaferro | Kathleen Scacciaferro | 802-363-0259 | kscacciaferro@gmail.com |
| Jan 18-19 | San Diego, CA | Lisa Thompson | Patricia Pascucci | 619-520-8995 | ppascucci@rchsd.org |
| Jan 25-26 | Albuquerque, NM | Lisbeth Carlisle | Lisbeth Carlisle | 505-459-7358 | lisbethcarlisle@aol.com |
| Jan 25-26 | La Jolla, CA | Liz Fraser | Liz Fraser | 1-800-scripps | fraser.elizabeth@scripps.org |
| Jan 25-26 | Paynesville, MN | Dana Spates | Dana Spates | 320-266-5476 | dspates@mchsi.com |
| Jan 31-Feb 1 | Minneapolis, MN | Carol Schoenecker | Carol Schoenecker | 612-672-6366 | cschoen2@fairview.org |
| Feb 1-2 | Norwich, CT | Jeanne Zuzel | Tim Zuzel | 860-889-4690 | healingtouchct@yahoo.com |
| Feb 1-2 | Red Bud, IL | Mary O'Neill | Clare Boehmer | 618-282-3848 | mailhealingmin@aol.com |
| Feb 4-5 | Woodbury, MN | Sheila Judd | Denise Wills | 651-326-0025 | dmwills@healtheast.org |
| Feb 7-8 | St Cloud, MN | Carol Schoenecker | Alyssa Mohs (ext 54687) | 320-251-2700 | mohsa@centracare.com |
| Feb 7-8 | Harrisonburg, VA | Gina Bondurant | Gina Bondurant | 540-433-3421 | calendulas@live.com |
| Feb 7-8 | Lakewood, CO | Carrie Niewenhous | Carrie Niewenhous | 303-210-3906 | cgn454@gmail.com |

Healing Touch Class Schedule 2014

These classes are recognized by the HTI Healing Touch Certificate Program; endorsed by the American Holistic Nurses Association, NCBTMB and California Board of Nursing

LEVEL 1; cont'd

| Date | Location | Instructor(s) | Contact | Phone | e-mail |
|--------------|------------------------|---------------------|---------------------|---------------|------------------------------------|
| Feb 8-9 | Nashville, TN | Bonnie Johnson | Bonnie Johnson | 615-383-3337 | jbonnie@aol.com |
| Feb 8-9 | Rochester, MN | Jan Halbach | Mary Laven | 507-281-6649 | mary@windoverfire.com |
| Feb 8-9 | Springfield, IL | Mary O'Neill | Kendra Hurd | 217-816-9287 | kkc6345@aol.com |
| Feb 8-9 | Bainbridge, IN | Sharon Smith | Sharon Smith | 812-878-2034 | cswholeness@aol.com |
| Feb 21-22 | Charleston, SC | Bonnie Johnson | Janet Neal | 843-388-1934 | healingtouch1@bellsouth.net |
| Feb 21-22 | Winston-Salem, NC | Deborah Larrimore | Ashley Fleetwood | 336-777-0680 | HTOftheCarolinas@me.com |
| Feb 22-23 | Stanford, CA | Sue Kagel | Elizabeth Helms | 650-863-1701 | elizabeth@sierahealingtouch.com |
| Feb 22-23 | La Jolla, CA | Liz Fraser | Liz Fraser | 1-800-scripps | fraser.elizabeth@scripps.org |
| Feb 22-23 | Albuquerque, NM | Lisbeth Carlisle | Lisbeth Carlisle | 505-459-7358 | lisbethcarlisle@aol.com |
| Feb 22-23 | Minneapolis, MN | Nola Schmitt | Janet Dahlem | 651-690-7758 | jldahlem@stkate.edu |
| Feb 22-23 | Tampa, FL | Kimberly Gray | Tammy Dragel | 813-870-4766 | tammy.dragel@baycare.org |
| Feb 23-24 | Austin, TX | Rita Kluny | Pat Brodnax | 512-627-9489 | pat@sosalliance.org |
| Feb 28-Mar 1 | St Paul, MN | Sheila Judd | Denise Joswial | 651-241-6217 | denise.joswiak@allina.com |
| Feb 28-Mar 2 | St Joseph, MN | Dana Spates | Jackie Mielke | 952-473-9378 | jackie@jackiemielke.com |
| Mar 1-2 | Silver Springs, MD | Lucrezia Mangione | Lucrezia Mangione | 802-578-3700 | hhservice@handcraftedhealth.net |
| Mar 1-2 | Grass Valley, CA | Elizabeth Helms | Sue Berney | 530-575-6586 | ruffreadysue@gmail.com |
| Mar 1-2 | St Louis, MO | Vicki Slater | Joan Hogrebe | 314-351-9621 | joanhogrebe@aol.com |
| Mar 7-8 | Roanoke, VA | Deborah Larrimore | Jane Rochelle | 540-589-8231 | teenytinypieces@gmail.com |
| Mar 14-15 | Arvada, CO | Lisa Anselme | RRCC | 303-914-6600 | www.rrcc.edu |
| Mar 15-16 | Silver Spring, MD | Lucrezia Mangione | Lucrezia Mangione | 802-578-3700 | hhservice@handcraftedhealth.net |
| Mar 15-16 | La Jolla/San Diego, CA | Trish Wragg | Haley Wragg | 760-310-1057 | wragg.patricia@scrippshealth.org |
| Mar 15-16 | Des Moines, IA | D Spates / L Holmes | Linda Holmes | 515-229-4000 | linda669@aol.com |
| Mar 22-23 | Paynesville, MN | Dana Spates | Dana Spates | 320-266-5476 | dspates@mchsi.com |
| Mar 29-30 | Lakeville, MN | Dana Spates | Dana Spates | 320-266-5476 | dspates@mchsi.com |
| Apr 4-5 | Harrisonburg, VA | Gina Bondurant | Gina Bondurant | 540-433-3421 | calendulas@live.com |
| Apr 5-6 | Hyde Park, VT | Ruth Eaton | Ruth Eaton | 802-371-9574 | reatonchtp@gmail.com |
| Apr 5-6 | Encinitas, CA | Mary Jane Aswegan | Rebecca Lundgren | 858-435-7181 | lundgren.rebecca@scrippshealth.org |
| Apr 5-6 | Indianapolis, IN | Sharon Smith | Carole Creech | 317-340-1926 | sassyroo1@yahoo.com |
| Apr 5-6 | Kansas City, MO | Jody Hueschen | Jody Hueschen | 816-838-0438 | jhueschen@aol.com |
| Apr 25-27 | St Joseph, MN | Dana Spates | Jackie Mielke | 952-473-9378 | jackie@jackiemielke.com |
| Apr 26-27 | Minneapolis, MN | Nola Schmitt | Janet Dahlem | 651-690-7758 | jldahlem@stkate.edu |
| May 3-4 | Norwich, CT | Jeanne Zuzel | Tim Zuzel | 860-889-4690 | healingtouchct@yahoo.com |
| May 9-10 | Bismarck, ND | Judy Turner | Renee Feist | 701-222-0546 | drlmfeist@bis.midco.net |
| May 16-17 | Winston-Salem, NC | Deborah Larrimore | Ashley Fleetwood | 336-777-0680 | HTOftheCarolinas@me.com |
| May 17-18 | Silver Springs, MD | Lucrezia Mangione | Lucrezia Mangione | 802-578-3700 | hhservice@handcraftedhealth.net |
| May 17-18 | Encinitas, CA | Mary Jane Aswegan | Rebecca Lundgren | 858-435-7181 | lundgren.rebecca@scrippshealth.org |
| May 17-18 | Greenwich, CT closed | Robert Brown Brugo | Roberta Brown Brugo | closed | |
| Jun 7-8 | Tampa, FL | Kimberly Gray | Tammy Dragel | 813-870-4766 | tammy.dragel@baycare.org |
| Jun 7-8 | La Jolla, CA | Liz Fraser | Liz Fraser | 1-800-scripps | fraser.elizabeth@scripps.org |
| Jun 14-15 | Bainbridge, IN | Sharon Smith | Sharon Smith | 812-878-2034 | cswholeness@aol.com |
| Jun 23-24 | Paynesville, MN | Dana Spates | Dana Spates | 320-266-5476 | dspates@mchsi.com |
| Jun 28-29 | Silver Springs, MD | Lucrezia Mangione | Lucrezia Mangione | 802-578-3700 | hhservice@handcraftedhealth.net |
| July 12-13 | Indianapolis, IN | Sharon Smith | Lori Wernsman | 317-695-8944 | lwernsman@gmail.com |
| July 26-27 | La Jolla/San Diego, CA | Trish Wragg | Haley Wragg | 760-310-1057 | wragg.patricia@scrippshealth.org |
| Aug 15-16 | Minneapolis, MN | Carol Schoenecker | Kathy Kerber | 612-863-7937 | kathryn.kerber@allina.com |
| Aug 16-17 | La Jolla, CA | Liz Fraser | Liz Fraser | 1-800-scripps | fraser.elizabeth@scripps.org |
| Aug 22-23 | Winston-Salem, NC | Deborah Larrimore | Ashley Fleetwood | 336-777-0680 | HTOftheCarolinas@me.com |
| Aug 22-23 | Arvada, CO | Carrie Niewenhaus | RRCC | 303-914-6600 | www.rrcc.edu |

Healing Touch Class Schedule 2014

These classes are recognized by the HTI Healing Touch Certificate Program; endorsed by the American Holistic Nurses Association, NCBTMB and California Board of Nursing

LEVEL 1; cont'd

| Date | Location | Instructor(s) | Contact | Phone | e-mail |
|-----------|------------------------|-------------------|------------------|---------------|------------------------------------|
| Sep 20-21 | Tampa, FL | Kimberly Gray | Tammy Dragel | 813-870-4766 | tammy.dragel@baycare.org |
| Sep 20-21 | Kansas City, MO | Jody Hueschen | Jody Hueschen | 816-838-0438 | jhueschen@aol.com |
| Sep 20-21 | Bainbridge, IN | Sharon Smith | Sharon Smith | 812-878-2034 | cswholeness@aol.com |
| Sep 27-28 | Red Bud, IL | Mary O'Neill | Clare Boehmer | 618-282-3848 | mailhealingmin@aol.com |
| Oct 3-4 | St Paul, MN | Barb Schommer | Denise Joswial | 651-241-6217 | denise.joswiak@allina.com |
| Oct 4-5 | Encinitas, CA | Mary Jane Aswegan | Rebecca Lundgren | 858-435-7181 | lundgren.rebecca@scrippshealth.org |
| Oct 14-15 | Woodbury, MN | Sheila Judd | Denise Wills | 651-326-0025 | dmwills@healtheast.org |
| Oct 18-19 | Minneapolis, MN | Jan Halbach | Janet Dahlem | 651-690-7758 | jldahlem@stkate.edu |
| Oct 25-26 | Charleston, SC | Bonnie Johnson | Janet Neal | 843-388-1934 | healingtouch1@bellsouth.net |
| Oct 25-26 | La Jolla/San Diego, CA | Trish Wragg | Haley Wragg | 760-310-1057 | wragg.patricia@scrippshealth.org |
| Nov 1-2 | La Jolla, CA | Liz Fraser | Liz Fraser | 1-800-scripps | fraser.elizabeth@scripps.org |
| Nov 1-2 | Indianapolis, IN | Sharon Smith | Carole Creech | 317-340-1926 | sassyroo1@yahoo.com |
| Nov 2-3 | Omaha, NE | Jeanne Thune | Jeanne Thune | 605-924-0141 | jeannethune@hotmail.com |
| Nov 8-9 | Charleston, SC | Bonnie Johnson | Janet Neal | 843-388-1934 | healingtouch1@bellsouth.net |
| Nov 16-17 | Sioux Falls, SD | Jeanne Thune | closed | | |
| Nov 21-22 | Winston-Salem, NC | Deborah Larrimore | Ashley Fleetwood | 336-777-0680 | HToftheCarolinas@me.com |
| Dec 12-13 | Red Wing, MN | Sarah Stinson | Sarah Stinson | 651-267-3506 | stinson.sarah@mayo.edu |

LEVEL 2

| Date | Location | Instructor(s) | Contact | Phone | e-mail |
|----------------|--------------------|-----------------------|-------------------------|---------------|----------------------------------|
| Jan 11-12 | Eau Claire, WI | S Peck / D Spates | Sue Peck | 715-832-1953 | pecksd@uwec.edu |
| Jan 11-12 | San Diego, CA | Lisa Thompson | Tricia Pascucci | 619-520-8995 | ppascucci@rchsd.org |
| Jan 18-19 | Redding, CA | Raine Benham | Debi Simon | 530-355-3669 | healingtouchrdg@aol.com |
| Jan 24-25 | Indianapolis, IN | Lisa Anselme | Sharon Smith | 812-878-2034 | cswholeness@aol.com |
| Jan 25-26 | Omaha, NE | Jeanne Thune | Irene Kohout | 402-881-7815 | rosifisher@yahoo.com |
| Feb 1-2 | Norwich, CT | Jeanne Zuzel | Tim Zuzel | 860-889-4690 | |
| Feb 1-2 | San Diego, CA | Mary Jane Aswegan | Donna Cahill | 619-686-3774 | cahill.donna@scrippshealth.org |
| Feb 8-9 | Silver Springs, MD | Lucrezia Mangione | Lucrezia Mangione | 802-578-3700 | hhservice@handcraftedhealth.net |
| Feb 8-9 | Burlington, VT | Kathleen Scacciaferro | Kathleen Scacciaferro | 802-363-0259 | kscacciaferro@gmail.com |
| Feb 22-23 | Minneapolis, MN | Jan Halbach | Janet Dahlem | 651-690-7758 | jldahlem@stkate.edu |
| Feb 28 - Mar 2 | St Joseph, MN | Jackie Mielke | Jackie Mielke | 952-473-9378 | jackie@jackiemielke.com |
| Mar 1-2 | St Louis, MO | Bonnie Johnson | Joan Hogrebe | 314-351-9621 | joanhogrebe@aol.com |
| Mar 8-9 | Norwich, CT | Jeanne Zuzel | Tim Zuzel | 860-889-4690 | healingtouchct@yahoo.com |
| Mar 8-9 | La Jolla, CA | Rauni King | Liz Fraser | 1-800-scripps | fraser.elizabeth@scripps.org |
| Mar 21-22 | Winston-Salem, NC | Deborah Larrimore | Ashley Fleetwood | 336-777-0680 | HToftheCarolinas@me.com |
| Mar 22-23 | Metairie, LA | Mary Frost | Mary Frost | 228-342-1519 | tothealt@aol.com |
| Mar 22-23 | Tampa, FL | Kimberly Gray | Tammy Dragel | 813-870-4766 | tammy.dragel@baycare.org |
| Mar 22-23 | Minneapolis, MN | Barb Schommer | Kathy Kerber | 612-863-7937 | kathryn.kerber@allina.com |
| Mar 28-29 | St Cloud, MN | Carol Schoenecker | Alyssa Mohs (ext 54687) | 320-251-2700 | mohsa@centracare.com |
| Mar 29-30 | Omaha, NE | Jeanne Thune | Vicki Baines | 402-350-8402 | vickibaines5@gmail.com |
| Apr 9 & 12 | Arvada, CO | Lisa Anselme | RRCC | 303-914-6600 | www.rrcc.edu |
| Apr 11-12 | Minneapolis, MN | TBA | Kathy Kerber | 612-863-7937 | kathryn.kerber@allina.com |
| Apr 15-16 | Woodbury, MN | Barb Schommer | Denise Wills | 651-326-0025 | dmwills@healtheast.org |
| Apr 25-27 | St Joseph, MN | Jackie Mielke | Jackie Mielke | 952-473-9378 | jackie@jackiemielke.com |
| Apr 26-27 | Minneapolis, MN | TBA | Janet Dahlem | 651-690-7758 | jldahlem@stkate.edu |
| May 3-4 | Stanford, CA | Elizabeth Helms | Elizabeth Helms | 650-863-1701 | elizabeth@sierrahealingtouch.com |
| May 3-4 | Paynesville, MN | Dana Spates | Dana Spates | 320-266-5476 | dspates@mchsi.com |
| May 3-4 | LaJolla, CA | Mary Jane Aswegan | Trisha Wragg | 760-519-6760 | wragg.patricia@scrippshealth.org |

Healing Touch Class Schedule 2014

These classes are recognized by the HTI Healing Touch Certificate Program; endorsed by the American Holistic Nurses Association, NCBTMB and California Board of Nursing

LEVEL 2; cont'd

| Date | Location | Instructor(s) | Contact | Phone | e-mail |
|---------------|-------------------|-------------------|------------------|---------------|------------------------------------|
| May 31- Jun 1 | Harrisonburg, VA | Deborah Larrimore | Gina Bondurant | 540-433-3421 | calendulas@live.com |
| Jun 20-21 | Winston-Salem, NC | Deborah Larrimore | Ashley Fleetwood | 336-777-0680 | HToftheCarolinas@me.com |
| Jun 28-29 | Red Bud, IL | Mary O'Neill | Clare Boehmer | 618-282-3848 | mailhealingmin@aol.com |
| July 12-13 | Indianapolis, IN | Kimberly Gray | Linda Lee | 317-498-0621 | corjalnll@aol.com |
| Aug 2-3 | Springfield, IL | Mary O'Neill | Kendra Hurd | 217-816-9287 | kkc6345@aol.com |
| Aug 9-10 | Bainbridge, IN | Mary O'Neill | Sharon Smith | 812-878-2034 | cswholeness@aol.com |
| Aug 9-10 | Kansas City, MO | Jody Hueschen | Jody Hueschen | 816-838-0438 | jhueschen@aol.com |
| Aug 16-17 | Encinitas, CA | Mary Jane Aswegan | Rebecca Lundgren | 858-435-7181 | lundgren.rebecca@scrippshealth.org |
| Sep 19-20 | Winston-Salem, NC | Deborah Larrimore | Ashley Fleetwood | 336-777-0680 | HToftheCarolinas@me.com |
| Sep 19-20 | Arvada, CO | Lisa Anselme | RRCC | 303-914-6600 | www.rrcc.edu |
| Sep 20-21 | La Jolla, CA | Rauni King | Liz Fraser | 1-800-scripps | fraser.elizabeth@scripps.org |
| Oct 18-19 | Minneapolis, MN | Carol Schoenecker | Janet Dahlem | 651-690-7758 | jldahlem@stkate.edu |
| Nov 1-2 | Harrisonburg, VA | Deborah Larrimore | Gina Bondurant | 540-433-3421 | calendulas@live.com |
| Nov 15-16 | Red Bud, IL | Mary O'Neill | Clare Boehmer | 618-282-3848 | mailhealingmin@aol.com |
| Nov 21-22 | St Paul, MN | Carol Schoenecker | Denise Joswial | 651-241-6217 | denise.joswiak@allina.com |
| Nov 8-9 | Tampa, FL | Kimberly Gray | Tammy Dragel | 813-870-4766 | tammy.dragel@baycare.org |
| Dec 7-8 | Tucson, AZ | Sue Kagel | Sue Kagel | 520-891-5162 | sue.kagel@gmail.com |
| Dec 12-13 | Winston-Salem, NC | Deborah Larrimore | Ashley Fleetwood | 336-777-0680 | HToftheCarolinas@me.com |



PROSH Level 5 Class, - Peru - Eileen Kearney, Mary Moloney and Graduates

Healing Touch Class Schedule 2014

These classes are recognized by the HTI Healing Touch Certificate Program; endorsed by the American Holistic Nurses Association, NCBTMB and California Board of Nursing

LEVEL 3

| Date | Location | Instructor(s) | Contact | Phone | e-mail |
|------------|-----------------------------|-----------------------|-------------------------|---------------|------------------------------------|
| Jan 11-12 | Red Bud, IL | Mary O'Neill | Clare Boehmer | 618-282-3848 | mailhealingmin@aol.com |
| Jan 17-18 | Winston-Salem, NC | Deborah Larrimore | Ashley Fleetwood | 336-777-0680 | HToftheCarolinas@me.com |
| Jan 25-26 | Nashville, TN | Bonnie Johnson | Bonnie Johnson | 615-383-3337 | pgraul@usi.edu |
| Feb 14-15 | San Diego, CA | Lisa Thompson | Patricia Pascucci | 619-520-8995 | ppascucci@rchsd.org |
| Feb 15-16 | Tampa, FL | Judy Turner | Tammy Dragel | 813-870-4766 | tammy.dragel@baycare.org |
| Feb 22-23 | Minneapolis, MN | Carol Schoenecker | Janet Dahlem | 651-690-7758 | jldahlem@stkate.edu |
| Feb 22-23 | Greenwich, CT closed | Jeanne Zuzel | Roberta Brown Brugo | closed | |
| Mar 1-2 | Kansas City, MO | Jody Hueschen | Jody Hueschen | 816-838-0438 | jhueschen@aol.com |
| Mar 1-2 | St Louis, MO | Mary O'Neill | Joan Hogrebe | 314-351-9621 | joanhogrebe@aol.com |
| Mar 8-9 | Indianapolis, IN | Lisa Anselme | Sharon Smith | 812-878-2034 | cswholeness@aol.com |
| Mar 15-16 | Silver Springs, MD | Jody Hueschen | Lucrezia Mangione | 802-578-3700 | hhservice@handcraftedhealth.net |
| Mar 22-23 | Burlington, VT | Kathleen Scacciaferro | Kathleen Scacciaferro | 802-363-0259 | kscacciaferro@gmail.com |
| Mar 29-30 | San Diego, CA | Mary Jane Aswegan | Donna Cahill | 619-686-3774 | cahill.donna@scrippshealth.org |
| Mar 29-30 | Omaha, NE | Jody Hueschen | Vicki Baines | 402-350-8402 | vickibaines5@gmail.com |
| May 9-10 | Arvada, CO | Lisa Anselme | RRCC | 303-914-6600 | www.rrcc.edu |
| May 16-17 | Minneapolis, MN | Carol Schoenecker | Kathy Kerber | 612-863-7937 | kathryn.kerber@allina.com |
| May 17-18 | La Jolla, CA | Rauni King | Liz Fraser | 1-800-scripps | fraser.elizabeth@scripps.org |
| Apr 26-27 | Minneapolis, MN | Jan Halbach | Janet Dahlem | 651-690-7758 | jldahlem@stkate.edu |
| Apr 11-12 | Winston-Salem, NC | Deborah Larrimore | Ashley Fleetwood | 336-777-0680 | HToftheCarolinas@me.com |
| Jun 13-14 | St Cloud, MN | Carol Schoenecker | Alyssa Mohs (ext 54687) | 320-251-2700 | mohsa@centracare.com |
| July 18-19 | Winston-Salem, NC | Deborah Larrimore | Ashley Fleetwood | 336-777-0680 | HToftheCarolinas@me.com |
| July 26-27 | Harrisonburg, VA | Deborah Larrimore | Gina Bondurant | 540-433-3421 | calendulas@live.com |
| Sep 20-21 | La Jolla, CA | Mary Jane Aswegan | Trisha Wragg | 760-519-6760 | wragg.patricia@scrippshealth.org |
| Sep 24-25 | Woodbury, MN | Barb Schommer | Denise Wills | 651-326-0025 | dmwills@healtheast.org |
| Oct 4-5 | Indianapolis, IN | Mary O'Neill | Sharon Smith | 812-878-2034 | cswholeness@aol.com |
| Oct 17-18 | Winston-Salem, NC | Deborah Larrimore | Ashley Fleetwood | 336-777-0680 | HToftheCarolinas@me.com |
| Oct 18-19 | Bismarck, ND | Judy Turner | Renee Feist | 701-222-0546 | dlrmfeist@bis.midco.net |
| Oct 18-19 | Kansas City, MO | Jody Hueschen | Jody Hueschen | 816-838-0438 | jhueschen@aol.com |
| Oct 18-19 | Minneapolis, MN | Barb Schommer | Janet Dahlem | 651-690-7758 | jldahlem@stkate.edu |
| Oct 18-19 | La Jolla, CA | Rauni King | Liz Fraser | 1-800-scripps | fraser.elizabeth@scripps.org |
| Nov 15-16 | Encinitas, CA | Mary Jane Aswegan | Rebecca Lundgren | 858-435-7181 | lundgren.rebecca@scrippshealth.org |

LEVEL 4

| Date | Location | Instructor(s) | Contact | Phone | e-mail |
|-------------|-----------------|-----------------------|-----------------------|--------------|------------------------------------|
| Jan 9-12 | Stoneville, NC | Deborah Larrimore | Ashley Fleetwood | 336-777-0680 | HToftheCarolinas@me.com |
| Jan 24-26 | Covington, LA | Mary Frost | Mary Frost | 228-342-1519 | tohealt@aol.com |
| Feb 21-23 | Tampa, FL | Judy Turner | Tammy Dragel | 813-870-4766 | tammy.dragel@baycare.org |
| Mar 14-16 | San Diego, CA | Anne Day | Patricia Pascucci | 619-520-8995 | ppascucci@rchsd.org |
| Mar 20-23 | Norwich, CT | Jeanne Zuzel | Tim Zuzel | 860-889-4690 | healingtouchct@yahoo.com |
| April 10-13 | Stillwater, MN | Judy Turner | Barb Schommer | 763-458-0220 | barb.schommer@gmail.com |
| May 15-18 | Selma, IN | Lisa Anselme | Sharon Smith | 812-878-2034 | cswholeness@aol.com |
| May 15-18 | Burlington, VT | Kathleen Scacciaferro | Kathleen Scacciaferro | 802-363-0259 | kscacciaferro@gmail.com |
| Jun 19-22 | Kansas City, KS | Mary Frost | Jody Hueschen | 816-838-0438 | jhueschen@aol.com |
| July 10-14 | Lakewood, CO | Lisa Anselme | Carrie Niewenhaus | 303-989-7982 | education@healingbeyondborders.org |
| Aug 7-10 | Stoneville, NC | Deborah Larrimore | Ashley Fleetwood | 336-777-0680 | HToftheCarolinas@me.com |

Healing Touch Class Schedule 2014

These classes are recognized by the HTI Healing Touch Certificate Program; endorsed by the American Holistic Nurses Association, NCBTMB and California Board of Nursing

LEVEL 5

| Date | Location | Instructor(s) | Contact | Phone | e-mail |
|-------------|------------------|-------------------|-------------------|--------------|--------------------------|
| Feb 13-16 | Hamptonville, NC | Deborah Larrimore | Ashley Fleetwood | 336-777-0680 | HToftheCarolinas@me.com |
| Mar 14-16 | San Diego, CA | Rauni King | Patricia Pascucci | 619-520-8995 | ppascucci@rchsd.org |
| April 10-13 | Stillwater, MN | Anne Day | Barb Schommer | 763-458-0220 | barb.schommer@gmail.com |
| Apr 24-27 | Norwich, CT | Jeanne Zuzel | Tim Zuzel | 860-889-4690 | healingtouchct@yahoo.com |
| July 24-27 | Kansas City, KS | Judy Turner | Jody Hueschen | 816-838-0438 | jhueschen@aol.com |
| Oct 2-5 | Hamptonville, NC | Deborah Larrimore | Ashley Fleetwood | 336-777-0680 | HToftheCarolinas@me.com |
| Oct 16-19 | Selma, IN | Lisa Anselme | Sharon Smith | 812-878-2034 | cswholeness@aol.com |
| Nov 7-9 | Tampa, FL | Judy Turner | Tammy Dragel | 813-870-4766 | tammy.dragel@baycare.org |

International Classes Level 1

| Date | Location | Instructor(s) | Contact | Phone | e-mail |
|-----------|-------------------------|-----------------------|------------------------|--------------|-------------------------------|
| Feb 1-2 | Charters Settlement, NB | Jeanne Balcom | Jocelyn Clark | 506-455-3141 | brab3@nb.sympatico.ca |
| Feb 15-16 | Dieppe, NB CANADA | Jeanne Balcom | Jeanne Balcom | 506-382-4832 | humming4health@hotmail.com |
| Feb 20-21 | Galway, IRELAND | L Anselme, F McCarthy | Flish McCarthy | 876750446 | mccarthy.felicia@gmail.com |
| Feb 22-23 | Dieppe, NB CANADA | Jeanne Balcom | Kate Armstrong ext6193 | 506-832-6210 | katearmstrong@snownursing.com |
| Mar 29-30 | Parksville, BC CANADA | Toby Krell | Anji Jones | 250-752-3893 | innerjpyht@gmail.com |
| Apr 5-6 | Vancouver, BC CANADA | Ginny Mulhall | Karen Stewart | 778-292-1845 | kasinbc@yahoo.ca |
| Apr 26-27 | Dawson Creek, BC | Lisa Hickey | Jenny Spitz | 250-784-5522 | jennyspitz@xplornet.ca |
| Sep 27-28 | Parksville, BC CANADA | Toby Krell | Anji Jones | 250-752-3893 | innerjpyht@gmail.com |

International Classes Level 2

| Date | Location | Instructor(s) | Contact | Phone | e-mail |
|-----------|-----------------------|-------------------|------------------|--------------|---------------------------------|
| Jan 18-19 | Victoria, BC CANADA | Catherine Awai | Catherine Awai | 250-597-4312 | catherineawai@gmail.com |
| Feb 8-9 | Vancouver, BC CANADA | Ginny Mulhall | Karen Stewart | 778-292-1845 | kasinbc@yahoo.ca |
| Feb 8-9 | Toronto, ON CANADA | Alexandra Jonsson | Angela Mattos | 705-652-0506 | HTCanada@healingtouchcanada.net |
| Feb 22-23 | Galway, IRELAND | Lisa Anselme | Flish McCarthy | 876750446 | mccarthy.felicia@gmail.com |
| Mar 22-23 | Dieppe, NB CANADA | Jeanne Balcom | Jeanne Balcom | 506-382-4832 | hummingforhealth@hotmail.com |
| Apr 4-5 | Prince George, BC | Marilyn Blair | Marilyn Blair | 250-564-5015 | Marilyn_Blair@telus.net |
| May 6-7 | Utrecht, Netherlands | Deborah Larrimore | Agnetha Delacauw | | info@healingtouchbelgie.be |
| May 8-9 | Potters Bar, UK | Terry Sparks | Alison Facey | | allisonfacey@googlemail.com |
| Jun 21-22 | Parksville, BC CANADA | Bex Worbets | Anji Jones | 250-752-3863 | innerjoyht@gmail.com |

International Classes Level 3

| Date | Location | Instructor(s) | Contact | Phone | e-mail |
|-----------|-----------------------|-------------------|------------------|--------------|------------------------------|
| Mar 1-2 | Galway, IRELAND | Lisa Anselme | Flish McCarthy | 876750446 | mccarthy.felicia@gmail.com |
| Apr 25-27 | Dieppe, NB French | Jeanne Balcom | Jeanne Balcom | 506-382-4832 | hummingforhealth@hotmail.com |
| May 2-4 | Dieppe, NB CANADA | Jeanne Balcom | Jeanne Balcom | 506-382-4832 | hummingforhealth@hotmail.com |
| May 10-11 | Oostkamp, BELGIUM | Deborah Larrimore | Agnetha Delacauw | | info@healingtouchbelgie.be |
| Nov 1-2 | Parksville, BC CANADA | Bev Worbets | Anji Jones | 250-752-3863 | innerjoyht@gmail.com |

International Classes Level 4

| Date | Location | Instructor(s) | Contact | Phone | e-mail |
|-----------|---------------------------|---------------|------------|--------------|------------------|
| Apr 28-30 | Andreisvale; South Africa | Mary Frost | Mary Frost | 228-342-1519 | tothealt@aol.com |

International Classes Level 5

| Date | Location | Instructor(s) | Contact | Phone | e-mail |
|---------|---------------------------|---------------|------------|--------------|------------------|
| May 4-6 | Andreisvale; South Africa | Mary Frost | Mary Frost | 228-342-1519 | tothealt@aol.com |

VISION

Spread Healing, Light and Love, creating Wholeness on Earth.

MISSION STATEMENT

Our mission is to spread healing and light worldwide through the heart-centered practice and teaching of Healing Touch. It is fulfilled by this non-profit membership and educational organization which:

- * Administers the Certification process for Healing Beyond Borders practitioners and instructors
- * Sets international standards of practice and international code of ethics for practitioners and instructors
- * Supports Healing Touch practitioners and instructors as they develop, practice and serve communities worldwide
- * Promotes and provides resources in health care integration and research in Healing Touch
- * Provides opportunities for promotion of and education about Healing Touch